



# MARYLAND'S BEST 2019 expo

buyer/grower directory



**FRESH  
LOCAL**

Maryland Department of Agriculture | [www.marylandsbest.net](http://www.marylandsbest.net)





## TABLE OF CONTENTS

<b>Event Sponsors.....</b>	<b>Page 4</b>
<b>MDA Marketing Staff .....</b>	<b>Page 10</b>
<b>Product List .....</b>	<b>Page 11</b>
<b>Maryland Map.....</b>	<b>Page 12</b>
<b>Seafood Availability Chart .....</b>	<b>Page 14</b>
<b>Seasonal Harvest Charts .....</b>	<b>Page 15</b>
<b>Translation Chart – “Pecks to Pounds”.....</b>	<b>Page 16</b>
<b>GAP/GHP Information .....</b>	<b>Page 18</b>
<b>Growers, Food Processors, and Watermen.....</b>	<b>Page 19</b>
<b>Buyers and Distributors.....</b>	<b>Page 39</b>
<b>Additional Attendees .....</b>	<b>Page 57</b>





From  
**Maryland**  
fields

to  
**Maryland**  
schools



**Choose Maryland-Grown.**

Maryland Farm to School connects schools to local farms to provide Maryland students with fresh, nutritious, delicious foods.

[www.marylandfarmtoschool.org](http://www.marylandfarmtoschool.org)



## Celebrating Maryland's Proud Rural Heritage



The Rural Maryland Council (RMC) is an independent state agency that is governed by a nonpartisan, 40-member board that includes representation from the federal, state, regional, county and municipal governments, as well as the for-profit and nonprofit sectors. Its mission is to identify challenges unique to rural communities and to craft public policy, programmatic or regulatory solutions. RMC serves as the State's federally designated state rural development council and functions as a statewide rural program and policy development and coordination entity.

### Connect with us at:

[rural.maryland.gov](http://rural.maryland.gov)  
(410) 841-5774  
[rmc.mda@maryland.gov](mailto:rmc.mda@maryland.gov)

Charlotte Davis, Executive Director  
Scott Warner, Chair

### Check out our video:

**What do you aspire for Rural Maryland?**

<https://youtu.be/fsAlfs-N5aQ>



[facebook.com/RuralMaryland](https://facebook.com/RuralMaryland)



[@RuralMaryland](https://twitter.com/RuralMaryland)



# Maryland Agricultural and Resource-Based Industry Development Corporation

**Celebrating 12 Years of Helping Fund Maryland's Ag Businesses!**

A few of our accomplishments since 2007 include:

- ☐ Helping 266 young and beginning farmers with financial assistance (including first-time land purchases)!
- ☐ Funding nearly 500 farm and rural business projects in every county in Maryland!
- ☐ Supporting the implementation of 162 on-farm value added processing projects!
- ☐ Launched the Next Generation Farmland Acquisition Program in 2017!

MARBIDCO provides loans for farming (including shellfish aquaculture), commercial forestry, and seafood production and processing, as well as providing loans with a grant component for farm energy efficiency projects.

MARBIDCO partners with commercial lenders to offer low-interest loans to young and beginning farmers and other rural businesses looking to expand or diversify their operations.

Find out how MARBIDCO can help your farm, forestry or seafood business. Contact your local bank, farm credit association, or call us directly at (410) 267-6807 for more information.



[www.marbidco.org](http://www.marbidco.org) (Office) 410-267-6807 (Fax) 410-267-6809





## Supporting Farms and the Future of Agriculture

Since 2000, SMADC has been helping farmers in Southern Maryland and beyond forge a new path towards the future of agriculture.



### Resources for Farmers:

- Marketing Resources
- Business Planning Tools
- Grant Opportunities
- Online Ag Community
- Mentor-Match Program

### Resources for Consumers:

- Farmers Market Directory
- Southern Maryland Meats
- Southern Maryland Trails
- Historic Horse Trail
- Farms for the Holidays
- Buy Local Challenge

find us online at [smadc.com](http://smadc.com)



SMADC is a division of the  
Tri-County Council for Southern Maryland





# **Protect Your Farming Future:**

# **Whole Farm Revenue Insurance**

***Insure between 50 to 85 percent whole-farm revenue***

***Includes a wide range of available coverage levels***

***Coverage for replanting, provisions that increase coverage for expanding operations, a higher maximum amount of coverage, and the inclusion of market readiness costs in the coverage***

***Tailored for any farm with up to \$8.5 million in insured revenue, including farms with specialty or organic commodities (both crops and livestock), or those marketing to local, regional, farm-identity preserved, specialty, or direct markets.***

***Ask a crop insurance agent today!***



Secretary of Agriculture Joseph Bartenfelder  
Deputy Secretary of Agriculture Julie Oberg

This message brought to you through  
a cooperative effort of the Maryland  
Department of Agriculture and the  
USDA Risk Management Agency.  
"This institution is an equal  
opportunity provider."



Governor Larry Hogan  
Lt. Governor Boyd K. Rutherford

**[www.mda.maryland.gov](http://www.mda.maryland.gov)**





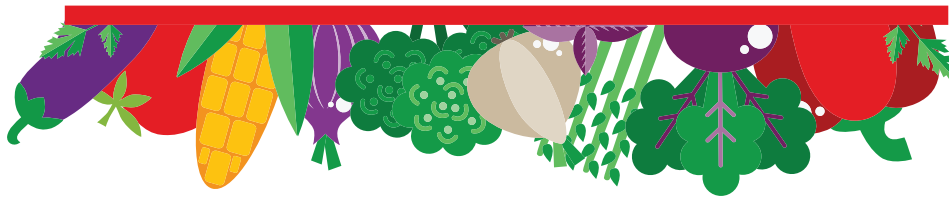
Become an official  
**true blue<sup>(sm)</sup> partner**

*as certified by the Maryland Department of Agriculture*

[www.marylandsbest.net](http://www.marylandsbest.net)



The true blue<sup>(sm)</sup> program recognizes restaurants and retail stores that support the local economy and the more than 5,000 Maryland watermen and seafood processing workers by serving quality Maryland crabs and crabmeat.



# MDA MARKETING STAFF

**Theresa Brophy, Director of International Marketing**

Phone: 410-841-5781, [Theresa.brophy@maryland.gov](mailto:Theresa.brophy@maryland.gov)

**Ron Buckhalt, Director of Seafood Marketing**

Phone: 410-841-5835, [Ron.Buckhalt@Maryland.gov](mailto:Ron.Buckhalt@Maryland.gov)

**Karen Fedor, Senior Agricultural Marketing Specialist - Farm to School**

Phone: 410-841-5773, [Karen.fedor@maryland.gov](mailto:Karen.fedor@maryland.gov)

**Karen Kirksey, Seafood Marketing Specialist**

Phone: 410-841-5791, [karen.kirksey1@maryland.gov](mailto:karen.kirksey1@maryland.gov)

**Donna Hill, Administrative Assistant**

Phone: 410-841-5987, [Donna.hill@maryland.gov](mailto:Donna.hill@maryland.gov)

**Mark Powell, Chief of Marketing**

Phone: 410-841-5775, [Mark.powell@maryland.gov](mailto:Mark.powell@maryland.gov)

**Stone Slade, Agricultural Marketing Specialist - Maryland's Best**

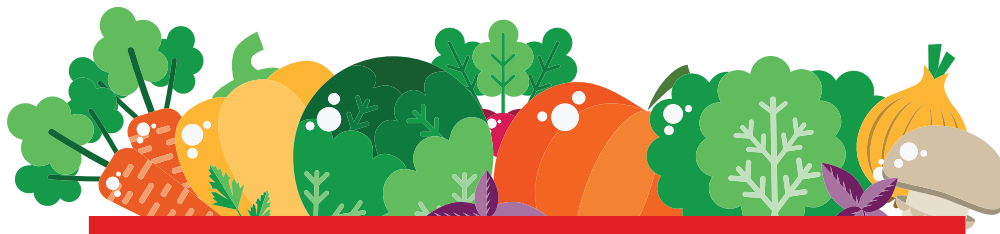
Phone: 410-841-5779, [Stone.slade@maryland.gov](mailto:Stone.slade@maryland.gov)

**Weida Stoecker, Agricultural Marketing Specialist - Farmers Markets**

Phone: 410-841-5776, [Weida.stoecker@maryland.gov](mailto:Weida.stoecker@maryland.gov)

**Kay-Megan Washington, Program Administrator - Ag Conflict Resolution Service (ACReS)**

Phone: 410-841-5778, [Kay-megan.washington1@Maryland.gov](mailto:Kay-megan.washington1@Maryland.gov)

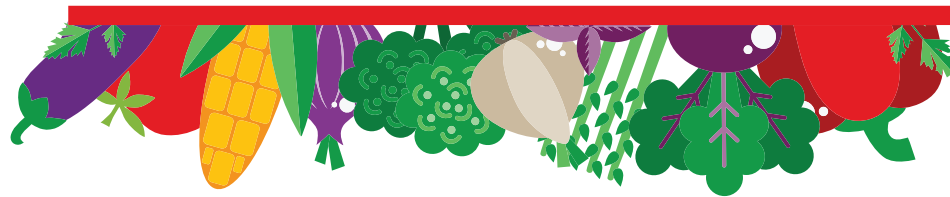






# PRODUCT LIST

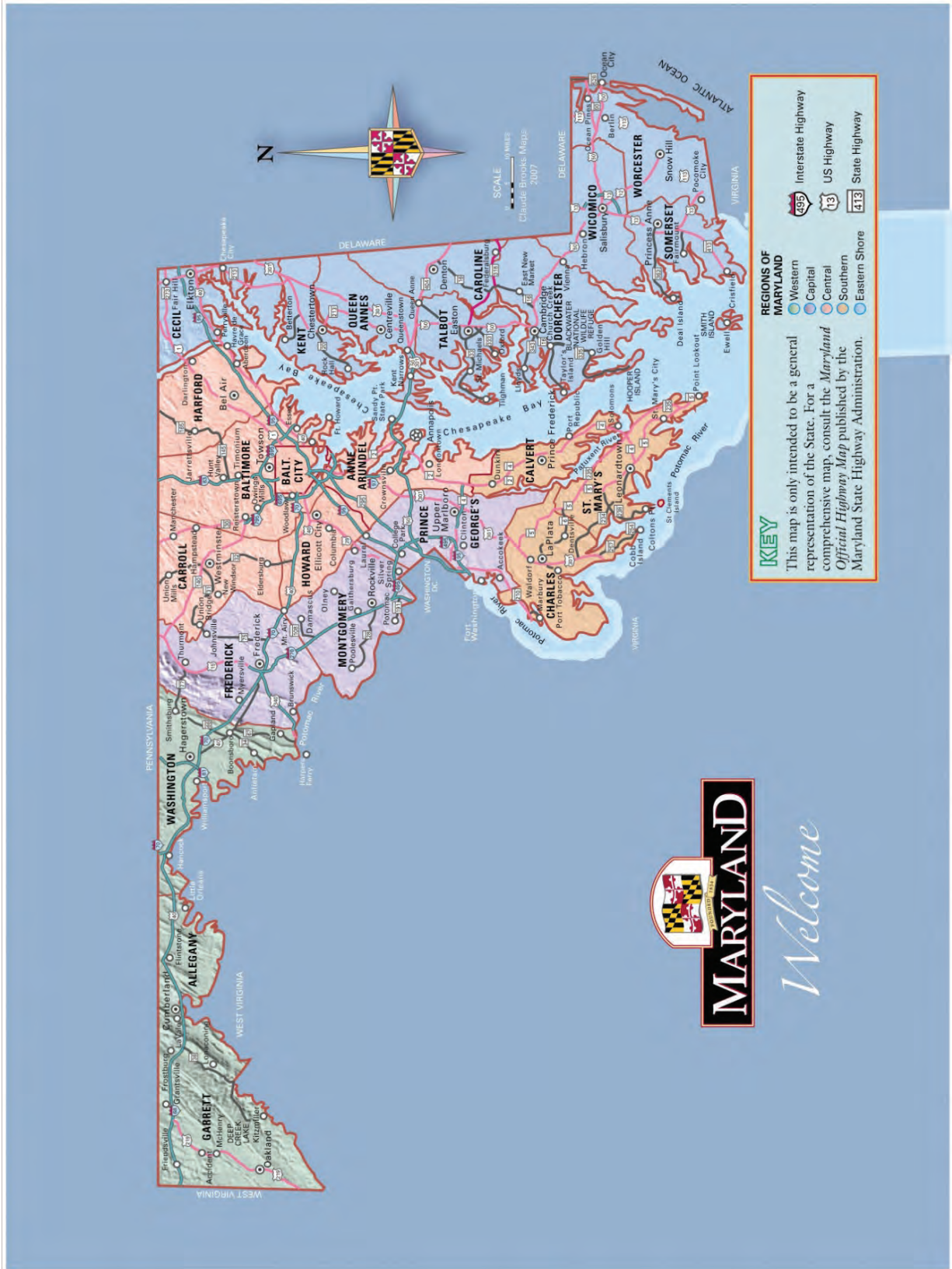
## A listing of typical Maryland products



Apples  
Apricots  
Arugula  
Asian Pears  
Asparagus  
Beets  
Blackberries  
Blueberries  
Bok Choy  
Boysenberries  
Broccoli  
Brussels Sprouts  
Cabbage  
Cantaloupes  
Carrots  
Cauliflower  
Celery  
Cherries  
Collards  
Cucumbers  
Currants  
Daikon

Edamame Soybeans  
Eggplant  
Endive  
Grapes  
Green Beans  
Green Onions  
Green Peppers  
Hot Peppers  
Kale  
Leeks  
Lettuce  
Lima Beans  
Melons  
Mushrooms  
Mustard Greens  
Nectarines  
Okra  
Onions  
Parsnips  
Peaches  
Pears  
Peas

Persimmons  
Plums  
Potatoes  
Radishes  
Raspberries  
Rhubarb  
Rutabagas  
Salad Greens  
Shallots  
Spinach  
Sprouts  
Squash  
Strawberries  
Sweet Corn  
Sweet Peppers  
Sweet Potatoes  
Swiss Chard  
Tomatillos  
Tomatoes  
Turnips  
Watermelons  
Zucchini





## Commercial Availability of Maryland Seafood

	January	February	March	April	May	June	July	August	September	October	November	December
Bass (Black)												
Bass (Striped)												
Bluefish												
Catfish (Blue)												
Catfish (White/Channel)												
Clams (Hard)												
Clams (Soft)												
Crab (Blue/Hard)												
Crab (Blue/Soft)												
Crab (Jonah)												
Crabmeat (Fresh)												
Crabmeat (Frozen)												
Crabmeat (Pasteurized)												
Croaker												
Flounder (Summer)												
Greyfish/Dogfish												
Lobster												
Mackerel (Spanish)												
Oysters (Farmed)												
Oysters (Wild)												
Perch (White)												
Perch (Yellow)												
Spot												
Turtle (Snapping)												

☐ No Availability

☐ Poor Availability

☐ Limited Availability

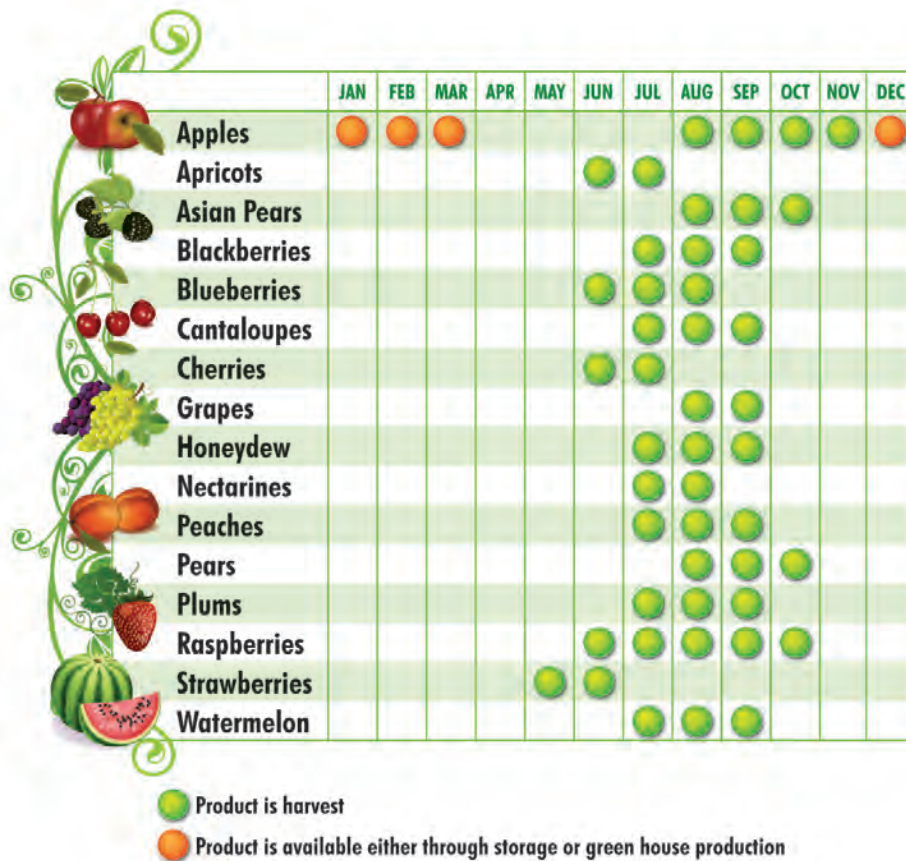
☐ Supply Interruptions

☐ Readily Available

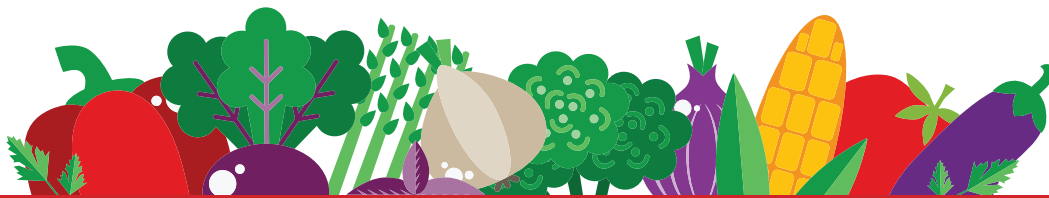
This calendar is for information purposes only. This is based on historical trends and could change at any time based on seasonal closures, weather, or other factors.



# FRUITS IN SEASON







# VEGETABLES IN SEASON

	JAN	FEB	MAR	APR	MAY	JUN	JUL	AUG	SEP	OCT	NOV	DEC
Asparagus				●	●	●						
Beans, Green/ Snap						●	●	●	●			
Beans, Lima						●	●	●	●			
Beets						●	●	●	●			
Broccoli					●	●				●	●	
Brussel Sprouts								●	●	●		
Cabbage						●	●	●	●	●		
Carrots						●	●	●	●	●		
Cauliflower					●	●		●	●	●	●	
Chard						●		●	●	●	●	
Collards						●	●	●	●	●	●	
Corn						●	●	●	●	●	●	
Cucumbers	●	●	●	●	●	●	●	●	●	●	●	●
Eggplant							●	●	●	●		
Herbs					●	●	●	●	●	●		
Garlic					●	●	●	●	●	●		
Kale					●	●	●	●	●	●	●	
Lettuces	●	●	●	●	●	●	●	●	●	●	●	●
Mushrooms	●	●	●	●	●	●	●	●	●	●	●	●
Okra							●	●	●	●	●	
Onions					●	●	●	●	●	●	●	
Peas						●	●	●	●	●	●	
Peas, Black-eye						●	●	●	●	●	●	
Peppers						●	●	●	●	●	●	
Radishes					●	●		●	●	●	●	
Potatoes						●	●	●	●	●	●	
Pumpkins								●	●	●	●	
Soybeans, Edaname								●	●	●	●	
Spinach					●	●		●	●	●	●	
Squash, Summer						●	●	●	●	●	●	
Squash, Winter								●	●	●	●	
Sweet Potatoes								●	●	●	●	●
Turnips					●	●		●	●	●	●	
Tomatoes	●	●	●	●	●	●	●	●	●	●	●	●

● Product is harvest

● Product is available either through storage or green house production

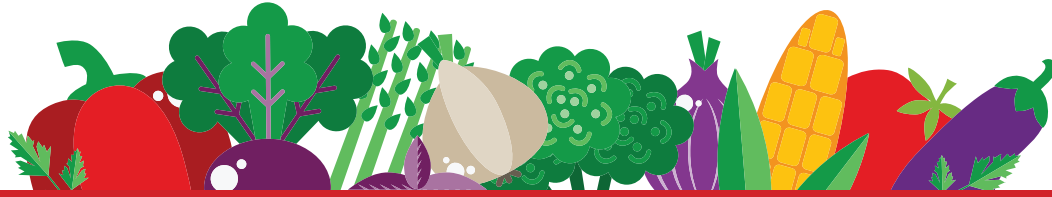


## TRANSLATION CHART

### PECKS TO POUNDS

Commodity	Unit	Approximate Net Weight	
		U.S. Pounds	Metric Kilograms
Apples	bushel	48	21.8
	loose pack	38-42	17.2-19.1
	tray pack	40-45	18.1-19.1
	cell pack	37-41	16.8-18.6
Asparagus	crate	30	13.6
Beans	bushel	56-60	25.4-27.2
Blackberries	12, 1/2-pint basket	6	2.7
Broccoli	wirebound crate	20-25	9.1-11.3
Brussels sprouts	ctn, loose pack	25	11.3
Butter	block	55,68	25,30.9
Cabbage	open mesh bag	50	22.7
	flat crate (1 3/4 bu)	50-60	22.7-27.2
	ctn, place pack	53	24
Cantaloupes	crate	40	18.1
Carrots	film plastic bags, mesh sacks, and cartons holding 48 1lb. film bags	55	24.9
Cauliflower	WGA crate	50-60	22.7-27.2
Celery	crate	60	27.2
Cherries	lug	20	9.1
Corn	wirebound crate	50	22.7
	ctn, packed 5oz ears	50	22.7
Cucumber	bushel	48	21.8
Eggplant	bushel	33	15
Eggs	average size, case, 30 doz.	47	21.3
Garlic	ctn of 12 cubes or 12 film bag pkgs, 12 cloves each	10	4.5
Grapes	Eastern, 12-qt basket	20	9.1
	Western, lug	28	12.7
	Western, 4-basket crate	20	9.1
Honey	gallon	11.84	5.4
Honeydew melons	2/3 ctn	28-32	12.7-14.5





## TRANSLATION CHART

### PECKS TO POUNDS

Commodity	Unit	Approximate Net Weight	
		U.S. Pounds	Metric Kilograms
Kale	ctn or crate	25	11.3
Lettuce	carton packed, 24	43-52	19.5-23.6
Lettuce, greenhouse	24-qt basket	10	4.5
Milk	gallon	8.6	3.9
Onions	dry, sack	50	22.7
	green, bunched, ctn 12-doz.	10-16	4.5-7.3
Peaches	bushel	48	21.8
	2 layer ctn or lug	22	10
	3/4-bu, ctn crate	38	17.2
Pears	bushel	50	22.7
Peas	unshelled, bushel	28-30	12.7-13.6
Peppers	bushel	25-30	11.3-13.6
Plums	ctn or lug	28	12.7
	1/2-bu basket	30	13.6
Potatoes	bushel	60	27.2
	barrel	165	74.8
	box	50	22.7
Raspberries	1/2-pt baskets	6	2.7
Spinach	bushel	18-20	8.2-9.1
Strawberries	24-qt crate	36	16.3
	12-qt crate	28-32	12.7-14.5
Sweet potatoes	bushel	55	24.9
	crate	50	22.7
Tomatoes	crate	60	22.7
	lug box	32	14.5
	2-layer flat	21	9.5
Tomatoes, greenhouse	12-qt basket	20	9.1
Turnips	without tops, mesh sack	22.7	
	bunched, crate	70-80	31.8-36.3
Watermelons	melons of average or medium size	25	11.3

## **GAP/GHP Certification and the FSMA Produce Safety Rule**

The Maryland Department of Agriculture (MDA) offers two Good Agricultural Practices (GAP) and Good Handling Practices (GHP) food safety certification programs for fruit and vegetable producers and packers: MDA GAP/GHP certification and USDA GAP/GHP certification. The goal of both GAPs and GHPs is to reduce the risk of microbial contamination of fresh fruits and vegetables. The current USDA and MDA standards are based on the Food and Drug Administration's Guidance to Industry with revisions to incorporate the Food Safety Modernization Act Produce Safety Rule requirements. MDA has entered into a cooperative agreement with FDA to develop a Maryland Produce Safety Program that provides outreach, education, technical assistance, inspection and enforcement equivalent to the requirements of the FSMA Produce Safety Rule. There is no way to guarantee that everything we grow and consume is free of microbial contamination, however, the risk can be reduced if preventive steps are taken during production, harvest and packing of fresh fruits and vegetables on the farm and in packing houses.

**Food Safety Modernization Act Produce Safety Rule:** MDA, the University of Maryland Plant Sciences Department and University of Maryland Extension are currently offering the Produce Safety Alliance Produce Rule training (which is the only course to meet the Produce Safety Rule training requirement), outreach and technical assistance to Maryland produce growers to facilitate compliance with the Rule. MDA will begin conducting inspection and enforcement activities in March 2019 to ensure Maryland produce growers are compliant with the Rule.

**USDA offers three types of GAP/GHP certification:** USDA GAP/GHP Certified, USDA Harmonized Field and Post Harvest Certified and USDA Harmonized Plus Field and Post Harvest Certified (Global Food Safety Initiative approved). To meet the requirements of buyers for GAP certification, the farm or business must complete a successful audit of its operation conducted by MDA's Food Quality Assurance Program USDA licensed auditors to determine compliance with Good Agricultural Practices and/or Good Handling Practices. The program is conducted through a cooperative agreement with USDA Agricultural Marketing Service. Successful completion of the audit and certification by USDA provides national recognition for producers to the many buyers now requiring audits for compliance to the GAP guidelines. USDA GAP/GHP audit charges are eligible for cost share assistance from USDA Specialty Crop Block grant funds through MDA. USDA Harmonized and USDA Harmonized Plus audit charges are fully funded through USDA Farm Service Agency.

**MDA State GAP:** MDA's Food Quality Assurance Program also offers a Maryland GAP certification program geared towards growers that are direct marketers, selling to retailers that accept the MDA GAP certification and/or those that are working towards USDA certification. Growers must attend approved food safety training and successfully complete an audit verifying their food safety practices to become MDA GAP certified. Funding for this program is provided through a Specialty Crop grant from USDA and is offered to growers at no cost.

**For questions on the above programs, please contact: Deanna Baldwin, Food Quality Assurance Program, 410-841-5769 or [Deanna.baldwin@maryland.gov](mailto:Deanna.baldwin@maryland.gov).**





# PRODUCERS

## Growers, Food Producers and Watermen

Abundant Grace Farms

Angelina's of Maryland

Apex Bee Company, LLC

Bartenfelder Farms

Baywater Farms

Bramble Blossoms

Caprikorn Farms Goat Cheese

Chapel's Country Creamery

Chesapeake Bay Roasting

Chesapeake Greenhouse

Chesapeake Harvest

Chester River Clam Company, Inc.

Chicone Farms

The Choptank Oyster Company

Chouquette Chocolates

Clinger's Natural Nut Butter

Clover Hill Dairy

Congressional Seafood Co.

Cornerstone Farms Inc. t/a Wright's Market

Cottingham Farm LLC

Deception Salsa

Dress It Up Dressing

Envista Farms

Faulkner Branch Cidery  
@ Blades Orchard

FireFly Farms, Inc.

The Federal Brewing  
Company, LLC

First Greens

Flying Dog Brewery

Frederick County Sheep  
Breeders Association

FRESHPAPER

Frysta Pops

Gotham Greens

Gunpowder Bison and  
Trading Company

HEX Ferments

High Country Creamery  
and Market

Hollywood Oyster  
Company

Honga Oyster Company

Hummingbird Farms, Inc.

Koinonia Farm

Lands End Farm

Liberty Delight Farms

Loveville Produce Auction

Lyon Distilling Co.

Madhouse Oysters, LLC

Miller Farms

Natures Garlic Farm

Not Joe Mamas Sauce

Olmo Bros Nursery & Farm

Open Seas Coffee

Orinoco Coffee & Tea

Pennland Pure

Phillips Wharf Environmental  
Center

Quality Ethnic Foods Inc.

Rise Up Coffee Roasters

Roseda Beef / Old Line Custom  
Meat Company

Schroll's Gourmet Food, LLC

Shepherds Manor Creamery

Shlagel Farms LLC.

Smoketown Brewing Station

Somerset Bay Foods

South Mountain Creamery

Springfield Farm

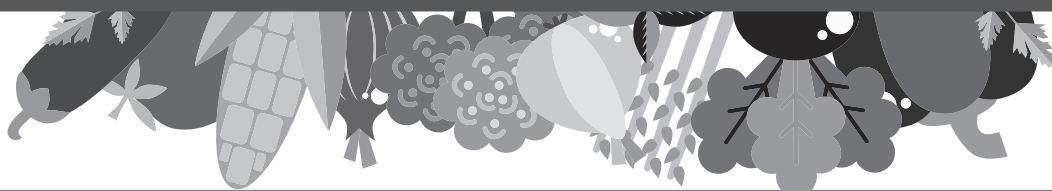
Stoecker Farms Produce, LLC

Tobacco Barn Distillery

Twin Valley Distillers

The Urban Winery

Wagner's Meats LLC



## Abundant Grace Farms

7904 Clark Road, Denton, MD 21629  
Caroline County

Brian Perez, Owner  
brian.abundantgracefarms@gmail.com, (443) 786-6856

**Business Description:** We are a veteran-owned family farm on the Eastern Shore of Maryland that grows USDA certified organic produce and grains. We also humanely raise pastured pork, free from antibiotics and hormones, while giving the animals the comforts of nature.

**Desired Markets:** Farm Stands and/or Farmers' Market, Grocery Chains, Institutions (Hospitals, Schools, etc.), Restaurants

**Farming Practices:** Grass Fed/Pastured, Certified Organic, **Food Quality Programs:** USDA Inspection (Beef, Pork, Lamb, Goat, Poultry)

**Products Available:** Asparagus, Beets, Bok Choy, Broccoli, Cantaloupes, Carrots, Cucumbers, Garlic, Green Peppers, Kale, Leeks, Lettuce, Okra, Peas, Spinach, Squash, Sweet Potatoes, Tomatoes, Watermelons, Pork

## Angelina's of Maryland

www.crabcake.com  
PO Box 942, Brooklandville, MD 21022  
Baltimore County

D.J. Ruggles, Managing Partner  
dj@crabcake.com, (410) 504-4308

**Business Description:** Angelina's now produces their famous original crab cakes along with a range of soups and other Maryland specialties with a strict focus on domestic blue crab. Available online at crabcake.com, at area farmers' markets and select local retailers.

**Desired Markets:** Farm Stands and/or Farmers' Market, Grocery Chains, Restaurants

**Products Available:** Crab cakes, crab soups, dips and sauces, Maryland specialties

## Apex Bee Company, LLC

www.apexbeecompany.com  
PO Box 7463, Halethorpe, MD 21227  
Baltimore County

Don John, Apiary Manager  
email@apexbeecompany.com, (410) 404-1968  
Cheryl John, Owner/President  
cj@apexbeecompany.com, (410) 404-1968  
Joshua John, New Business Manager  
jj@apexbeecompany.com, (410) 404-1968  
Melissa John, Social Media Manager  
mj@apexbeecompany.com, (410) 404-1968

**Business Description:** We are a family-owned and operated agricultural business based in Central Maryland. We specialize in local chemical-free beekeeping. We sell locally harvested raw honey, 3-lb honey bee packages, 5-frame nucs, and specialty beekeeping products.

**Desired Markets:** Farm Stands and/or Farmers' Market, Grocery Chains, Institutions (Hospitals, Schools, etc.)

**Farming Practices:** Conventional

**Products Available:** All-natural honey and hive products

## Bartenfelder Farms

4110 Payne Road, Preston, MD 21655  
Caroline County

Jessica Harding, Manager  
bartfarms9813@yahoo.com, (410) 913-2590  
Joey Bartenfelder  
Jamie Bartenfelder  
Mark Harding

**Business Description:** We are a family-owned and operated farm. Our home farm is in Preston, but we operate in both Caroline and Dorchester counties. We grow a wide variety of produce to sell both wholesale and retail. We grow many varieties of produce including collards, kale, sweet corn, cabbage, tomatoes, sweet and hot peppers, eggplants, squash, strawberries, spring onions, beets, turnips, okra, zucchini, cucumbers, cantaloupes, watermelons, and butternut & acorn squash. We also grow some unique items including: tomatillos, canary melons, Japanese eggplants, and strawberry-tomatoes.

**Desired Markets:** Farm Stands and/or Farmers' Market,



Grocery Chains, Institutions (Hospitals, Schools, etc.),  
Restaurants

**Farming Practices:** Conventional

**Food Quality Programs:** MDA GAP Certification

**Products Available:** Arugula, Asparagus, Beets, Bok Choy, Broccoli, Brussel Sprouts, Cabbage, Cantaloupes, Carrots, Cauliflower, Collards, Cucumbers, Daikon, Eggplant, Green Beans, Green Onions, Green Peppers, Hot Peppers, Kale, Leeks, Lettuce, Melons, Mustard Greens, Okra, Peas, Potatoes, Radishes, Rhubarb, Rutabagas, Salad Greens, Spinach, Squash, Strawberries, Sweet Corn, Sweet Peppers, Sweet Potatoes, Swiss Chard, Tomatillos, Tomatoes, Turnips, Watermelons, Zucchini

## Baywater Farms

www.baywaterfarms.com

27616 Little Lane, Salisbury, MD 21801

Wicomico County

Tim Fields, Director of Operations

tim@baywatergreens.com, (443) 783-4185

Phil Cochiario, Production Manager

Jess Molnar, Market Manager

**Business Description:** We are a sixth-generation family farm located on the Eastern Shore of Maryland. Our farm grows heirloom non-GMO specialty produce all year long inside of our hydroponic greenhouses. We also grow seasonal field crops including carrots, tomatoes, peppers and more. Baywater offers produce for wholesale distributors, restaurants and retail products for grocery stores. We have controlled, cold-chain delivery available in a 300-mile radius. Baywater takes food safety very seriously and we are currently USDA Harmonized GAP certified.

**Desired Markets:** Farm Stands and/or Farmers' Market, Grocery Chains, Institutions (Hospitals, Schools, etc.), Restaurants

**Farming Practices:** Conventional

**Food Quality Programs:** USDA Harmonized GAP Plus (GFSI)

**Products Available:** Arugula, Beets, Bok Choy, Broccoli, Cabbage, Carrots, Cauliflower, Collards, Daikon, Eggplant, Green Peppers, Hot Peppers, Kale, Lettuce, Mustard Greens, Radishes, Salad Greens, Sprouts, Squash, Sweet Peppers, Swiss Chard, Tomatillos, Tomatoes, Watermelons, Zucchini, Many varieties Micro Greens

## Bramble Blossoms

www.brambleblossoms.com

6938 Hubbard Road, Hurlock, MD 21643

Dorchester County

Robert Bramble, Owner

brambleblossoms@comcast.net, (410) 310-2748

Trudy Bramble, Co-Owner

brambleblossoms@comcast.net

**Business Description:** Family-owned and operated hydroponic greenhouse, specializing in leafy greens. Romaine, Bibb lettuce, spring mix and arugula available year round. MD GAP certified and have successfully completed the Produce Safety Alliance training course.

**Desired Markets:** Institutions (Hospitals, Schools, etc.), Restaurants

**Food Quality Programs:** MDA GAP Certification

**Products Available:** Arugula, Lettuce

## Caprikorn Farms Goat Cheese

www.caprikornfarms.com

20312 Townsend Road, Gapland MD 21779

Washington County

Rhonda Drake, Operations Manager

kidslovegoatmilk3@gmail.com, (301) 304-4803

Duane Heaton, Demo Coordinator

Duane\_Heaton@yahoo.com

**Business Description:** We are a goat dairy farm that produces high quality milk for the processing of various goat cheeses. We are located in Gapland, Maryland. We currently participate in three farmers' markets and supply to a number of grocery chains such as Wegmans, Harris Teeter, Whole Foods and Common Market.

**Desired Markets:** Farm Stands and/or Farmers' Market, Grocery Chains, Institutions (Hospitals, Schools, etc.), Restaurants

**Farming Practices:** Grass Fed/Pastured

**Products Available:** Cheese

## Chapel's Country Creamery

www.chapelscreamery.com  
10380 Chapel Road, Easton, MD 21601  
Talbot County

Trisha Boyce, Owner  
info@chapelscreamery.com, (410) 820-6647  
Jarred Boyce, Owner  
info@chapelscreamery.com, (410) 820-6647

**Business Description:** We handcraft artisan cheeses from our own Jersey and Holstein cows milk in Easton, MD. The quality care of our cows and land is reflected in our delicious, unique selection of cheeses. We are the closest farmstead, artisan cheese producer to Maryland, Virginia and DC.

**Desired Markets:** Grocery Chains, Restaurants

**Farming Practices:** Conventional

**Products Available:** Cheese

## Chesapeake Bay Roasting

www.cbrccoffee.com  
2100 Concord Blvd. Suite J, Crofton, MD 21114  
Anne Arundel County

Rick Erber, Founder, Director of Sales  
rick@cbrccoffee.com, (410) 454-0102  
Josh Richardson, Business Development Representative  
Makana Alcain, Customer Advocate and Coffee Coach  
Kevin Kehus, General Manager

**Business Description:** Chesapeake Bay Roasting Company (CBRC) is a specialty coffee roaster established in Crofton, Maryland in 2002. We roast USDA-certified organic and conventional coffees. Our mission is to sustainably roast and deliver the region's finest specialty-grade coffees that contribute to environmental causes and directly impact the health of the Chesapeake Bay. CBRC has contributed coffee, time and funding to local watershed clean-up groups, community composting organizations, local schools, and more to help in the education and improvement of water quality. Taste the difference. Making a difference.

**Desired Markets:** Farm Stands and/or Farmers' Market, Grocery Chains, Institutions (Hospitals, Schools, etc.), Restaurants

**Farming Practices:** Conventional, Certified Organic

**Products Available:** Coffee

## Chesapeake Greenhouse

www.wegrowlettuce.com  
830 Hall Road, Sudlersville, MD 21668  
Queen Anne's County

John Maniscalco, Owner  
john@wegrowlettuce.com, (410) 205-2460  
Laszlo de Simon

**Business Description:** We grow twelve lettuce varieties and 10 herb varieties. We also grow microgreens and English cucumbers. We deliver locally grown lettuce in our refrigerated trucks to the Annapolis and Baltimore / Washington Metro Area. Give us a call or email to see what the schedule is for your area. Our greenhouse is dedicated to growing special gourmet lettuces for our customers. If there is something special you are interested in having grown locally, just let us know.

**Desired Markets:** Farm Stands and/or Farmers' Market, Institutions (Hospitals, Schools, etc.), Restaurants

**Products Available:** Arugula, Cucumbers, Kale, Lettuce, Mustard Greens, Salad Greens, Lettuces (Bibb, Butter, Red Bibb, Spring Mix, Chesapeake Mix, Bouquet Mix, Asian Mix, Red Oak, Green Oak, Red Frisee, Mini Romaine, & Green Leaf), Herbs (Basil, Lime Basil, Chives, Garlic Chives, Dill, Sage, Thyme, Rosemary, Mint, & Greek Oregano), Other: Baby Kale, English Cucumbers

## Chesapeake Harvest

www.chesapeakeharvest.com  
101 Marlboro Avenue Suite 53, Easton, MD 21601  
Talbot County

Natalie Slater, Assistant to Executive Director  
natalie@chesapeakeharvest.com, (410) 690-7348  
Tracy Ward, Executive Director  
tracy.ward@eastonedc.com  
Bri Farrell, Regional Sales Manager  
bri@chesapeakeharvest.com

**Business Description:** Chesapeake Harvest is an online marketplace (wholesale and retail) of locally produced food and food-related products. Chesapeake Harvest envisions a regional food production and distribution system that increases agricultural employment on the Eastern Shore of Maryland and contributes to a vibrant regional economy, with enhanced food production, distribution infrastructure, food security and the preservation of farms.



**Desired Markets:** Farm Stands and/or Farmers' Market, Institutions (Hospitals, Schools, etc.), Restaurants

**Farming Practices:** Conventional, Grass Fed/Pastured

**Food Quality Programs:** MDA GAP Certification, USDA Harmonized GAP Plus (GFSI)

**Products Available:** Apples, Arugula, Asparagus, Beets, Blackberries, Bok Choy, Broccoli, Brussel Sprouts, Cabbage, Cantaloupes, Carrots, Cauliflower, Cucumbers, Currants, Eggplant, Garlic, Green Beans, Green Onions, Green Peppers, Hot Peppers, Kale, Leeks, Lettuce, Melons, Mushrooms, Mustard Greens, Onions, Peaches, Peas, Potatoes, Radishes, Salad Greens, Spinach, Squash, Strawberries, Sweet Corn, Sweet Potatoes, Tomatillos, Tomatoes, Watermelons, Zucchini, Chicken, Duck, Lamb, Pork, Veal, Eggs

## Chester River Clam Company, Inc.

305 Roe Ingleside Road, Centreville, MD 21617  
Queen Anne's County

Sean McGarvey, EVP  
smjmcgarvey@hotmail.com, (443) 928-7773

**Business Description:** Eastern Shore distributor and manufacturer.

**Desired Markets:** Grocery Chains, Institutions (Hospitals, Schools, etc.), Restaurants

**Farming Practices:** Grass Fed/Pastured

**Food Quality Programs:** USDA Inspection (Beef, Pork, Lamb, Goat, Poultry)

**Products Available:** Broccoli, Brussel Sprouts, Cauliflower, Peas, Potatoes, Spinach, Squash, Sweet Corn, Zucchini, Beef, Bison, Chicken, Duck, Lamb, Pork, Turkey, Veal

## Chicone Farms

4928 Chicone Road, Vienna, MD 21869  
Dorchester County

John Brinsfield, Owner  
jchicone63@gmail.com, (443) 614-2419  
Valarie Brinsfield

**Business Description:** We have asparagus in the spring, sweet potatoes and grains in the fall. We are a family of Maryland farmers for over 300 years!

**Desired Markets:** Grocery Chains, Institutions (Hospitals, Schools, etc.)

**Farming Practices:** Conventional

**Food Quality Programs:** MDA GAP Certification

**Products Available:** Asparagus, Sweet Potatoes

## The Choptank Oyster Company

www.choptanksweets.com  
6035 Castle Haven Road, Cambridge, MD 21613  
Dorchester County

Kevin McClarren, GM  
kevin@choptanksweets.com, (443) 521-6425  
Bubba Parker

**Business Description:** Maryland's oldest oyster farm.

**Desired Markets:** Grocery Chains, Restaurants

**Products Available:** Oysters

## Chouquette Chocolates

www.chouquette.us  
10220 Democracy Lane, Potomac, MD 20854  
Montgomery County

Sarah Dwyer, Chocolatiere  
sarah@chouquette.us, (301) 651-4442  
Sue Cassidy  
sue@chouquette.us

**Business Description:** Locally made chocolate-covered caramels for all occasions - weddings especially! Custom designs (your logo!) to tell your story on our chocolates. Locally inspired designs and flavors. Ask to try our Caramel with Old Bay. Inclusive employer of people living with neurological differences.

**Desired Markets:** Farm Stands and/or Farmers' Market, Grocery Chains, Institutions (Hospitals, Schools, etc.), Restaurants

**Products Available:** Small-batch chocolate-covered caramels.

## Clinger's Natural Nut Butter

www.clingersnatural.com  
PO Box 1102, 2020 Windsor Dr.,  
Suite G-1, Salisbury, MD 21802  
Wicomico County

Mark Stephenson, President  
mark@clingersnatural.com, (410) 726-1603

**Business Description:** Formally "Nuts 2 You." We grow peanuts on the lower Eastern Shore. We offer our products in the wholesale and farmers' markets. We also created a line of all-natural nut butters using our peanuts and other nuts sourced from smaller growers around the country. Our reputation for connecting independent growers and producers with retailers of the same mindset has helped propel our brand in the Mid-Atlantic. Established in 1996 on the Ocean City, MD boardwalk, we now partner with 37 independent retailers and restaurants.

**Desired Markets:** Farm Stands and/or Farmers' Market, Grocery Chains, Institutions (Hospitals, Schools, etc.), Restaurants

**Farming Practices:** Conventional

**Products Available:** Nut butters

## Clover Hill Dairy

27925 Woodburn Hill Road, Mechanicsville, MD 20659  
St. Mary's County

Donna Sasscer, St. Mary's County Agriculture Manager  
donna.sasscer@stmarysmd.com, (240) 309-4021

**Business Description:** Amish-owned and operated dairy. Wide variety of cheeses made on premises, plus Amish canned and baked goods and handcrafts.

**Desired Markets:** Farm Stands and/or Farmers' Market, Grocery Chains, Institutions (Hospitals, Schools, etc.), Restaurants

**Farming Practices:** Conventional

**Food Quality Programs:** Maryland Egg Quality Assurance

**Products Available:** Cheese, Eggs, Amish canned and baked goods and handcrafts.

## Congressional Seafood Co.

www.congressionalseafood.com  
7775 Chesapeake Bay Court, Jessup, MD 20794  
Howard County

Kelly Morris, Director of Marketing  
ksm@congressionalseafood.com, (800) 991-8750  
Kelly Johnson, Chef  
Amos LaClair, Sales Rep  
Will Ciociola, Sales Rep

**Business Description:** Congressional Seafood is a full-service fresh and frozen seafood distributor as well as the Mid-Atlantic's premium supplier of high-quality seafood, proudly providing the freshest products to chefs, caterers, and high-end restaurants and retailers all along the Eastern Seaboard. For over two decades we've established and maintained a reliable reputation for providing the highest quality seafood, reasonably priced and responsibly sourced both locally, and around the world!

**Desired Markets:** Grocery Chains, Restaurants

**Farming Practices:** Conventional

**Food Quality Programs:** USDA Inspection (Beef, Pork, Lamb, Goat, Poultry)

**Products Available:** Chesapeake Bay Wild Blue Catfish, local oysters.

## Cornerstone Farms Inc. t/a Wright's Market

www.wrightsmarket.com  
9300 Old RailRoad Road, Mardela Springs, MD 21837  
Wicomico County

Charles Wright IV, President  
charles@wrightsmarket.com, (410) 742-8845

**Business Description:** Diverse vegetable, grain, retail market, u-pick, agri-tourism and poultry farm.

**Desired Markets:** Farm Stands and/or Farmers' Market, Institutions (Hospitals, Schools, etc.), Restaurants

**Farming Practices:** Conventional

**Food Quality Programs:** MDA GAP Certification

**Products Available:** Sweet Corn, Sweet Potatoes



## Cottingham Farm LLC

www.cottinghamfarm.com  
28038 Goldsborough Neck Road, Easton, MD 21601  
Talbot County

Cleo Braver, Owner and Farmer  
cleo@cottinghamfarm.com, (443) 463-1298

**Business Description:** Year-round certified organic vegetables and herbs and pastured heritage pork and chicken eggs.

**Desired Markets:** Grocery Chains, Institutions (Hospitals, Schools, etc.), Restaurants

**Farming Practices:** Grass Fed/Pastured, Certified Organic

**Food Quality Programs:** USDA Inspection (Beef, Pork, Lamb, Goat, Poultry), Maryland Egg Quality Assurance

**Products Available:** Arugula, Bok Choy, Carrots, Eggplant, Garlic, Mustard Greens, Potatoes, Radishes, Salad Greens, Spinach, Sweet Peppers, Sweet Potatoes, Swiss Chard, Tomatoes, Pork, Eggs, Herbs

## Deception Salsa

www.deceptionsalsa.com  
1708 Peartree Lane, Crofton, MD 21114  
Anne Arundel County

Chad Houck, Owner  
chad@deceptionsalsa.com, (410) 353-2861

**Business Description:** Deception Salsa products have a unique flavor profile. All of our gourmet salsas feature the Red Cherry Pepper and start out sweet and then brings the heat. It's this deceiving flavor that sets Deception in a league of its own. Our salsas are made with all natural ingredients and whole, fresh peppers ranging in heat from mild to wild. We never add salt, water or tomato paste as an ingredient. There's a flavor for every palate; find yours today. We have been honored with multiple awards from salsa competitions around the United States including five World Champions and multiple Scoville Awards.

**Desired Markets:** Farm Stands and/or Farmers' Market, Grocery Chains

**Farming Practices:** Conventional

**Products Available:** Prepackaged Salsas from Mild to Wild. Girly Girl (mild tomato), Just Peachy (mild peach, World Champion 2018), Entice (medium black bean and corn, World Champion 2016), Aloha (medium pineapple, World Champion 2017), Tease (medium tomato), Oink (spicy bacon salsa), Jealous (spicy verde, World Champion 2016), Insanity (hot tomato, World Champion 2018), I Dare You (XX hot tomato)

## Dress It Up Dressing

www.dressitupdressing.com  
4825 Cordell Ave, Suite 210, Bethesda, MD 20814  
Montgomery County

Taylor Bagen, Brand Development Manager  
taylor@dressitupdressing.com, (301) 979-9555  
Sophia Maroon, CEO & Founder  
sophia@dressitupdressing.com  
Hannah Isles, Sales & Retail Manager  
hannah@dressitupdressing.com

**Business Description:** We are passionate makers of all-natural salad dressings. Our dressings are carefully crafted with a few simple ingredients that are beneficial and healthy – like a salad! Dress It Up Dressing was founded by Sophia Maroon, a mother of three who knew that the best way to get her children to eat their greens was to use a great salad dressing. Although she would have loved to save time with store-bought dressing, she didn't love the ingredients. With her mother's dressing recipes in hand, and the belief that others might share her desire for convenience without sacrificing quality, Sophia founded Dress It Up Dressing.

**Desired Markets:** Farm Stands and/or Farmers' Market, Grocery Chains, Institutions (Hospitals, Schools, etc.), Restaurants

**Farming Practices:** Conventional

**Products Available:** Salad Dressings, including products suitable for several specialty diets (diabetic, gluten-free, paleo, keto, Whole30, kosher, and vegan). Our flavors are as follows: Apple Cider Vinaigrette, Blackberry Vinaigrette, Caesar Dressing, Champagne Vinaigrette, Ranch Dressing, Red Wine Vinaigrette, Sesame Tahini Dressing. Available in food service sizes.

## Envista Farms

www.envistafarms.com  
600-B Abbruzzi Drive, Chester, MD 21619  
Queen Anne's County

Kevin Doyle, Manager  
kmdoyle1964@gmail.com, (410) 829-0260  
Randy Bapst, Manager  
randallbapst@gmail.com

**Business Description:** We are a hydroponic grower of herbs and leafy greens with multiple farms in the Mid-Atlantic Region (PA, DE & MD). We are currently servicing grocery chains throughout the region. We have our own farms and are expanding with a network of contract growers.

**Desired Markets:** Farm Stands and/or Farmers' Market, Grocery Chains, Institutions (Hospitals, Schools, etc.)

**Food Quality Programs:** USDA Harmonized GAP Plus (GFSI)

**Products Available:** Lettuce, Herbs

## Faulkner Branch Cidery @ Blades Orchard

www.BladesOrchard.com  
4822 Preston Road, Federalsburg, MD 21632  
Caroline County

Stephen Blades, Owner  
bladesorchard@bladesorchard.com, (410) 829-0334  
Lynda Blades

**Business Description:** Full-service orchard with all manner of fruit, plus hard cider company offering a variety of ciders plus distilled spirits in 2019.

**Desired Markets:** Farm Stands and/or Farmers' Market, Grocery Chains, Institutions (Hospitals, Schools, etc.)

**Food Quality Programs:** MDA GAP Certification

**Products Available:** Apples, Apricots, Asian Pears, Blackberries, Blueberries, Cantaloupes, Cherries, Peaches, Pears, Strawberries

## The Federal Brewing Company, LLC

www.fedbrew.com  
102 S. Main Street, Federalsburg, MD 21632  
Caroline County

Gayle Galbraith, Founder/Owner  
gayle@fedbrew.com, (215) 275-0009  
Stanley J. Nowak, Co-founder  
stanleyjnowak@comcast.net

**Business Description:** The Federal Brewing Company (Fed Brew) is an artisanal Kombucha brewery operating in Caroline County, Maryland. Fed Brew was founded and is owned by a board-certified health coach and specializes in wild-fermented, adaptogenic Kombucha with extraordinary flavor profiles. Packaged in 750 ml bottles and kegs, our Kombucha is mildly effervescent and is sure to please even the pickiest palate.

**Desired Markets:** Farm Stands and/or Farmers' Market, Grocery Chains, Institutions (Hospitals, Schools, etc.), Restaurants

**Products Available:** Kombucha (fermented probiotic health elixir), Custom Blended Organic Teas and Herbs

## FireFly Farms, Inc.

www.fireflyfarms.com  
107 South Main Street, PO Box 257, Accident, MD 21520  
Garrett County

Michael Black, Projects Manager  
michael@fireflyfarms.com, (301) 746-8188  
Ryland Boggess, Sales Manager  
ryland@fireflyfarms.com

**Business Description:** Goat and cow cheese manufacturer in Western Maryland.

**Desired Markets:** Farm Stands and/or Farmers' Market, Grocery Chains, Restaurants

**Farming Practices:** Grass Fed/Pastured

**Products Available:** Cheese

## First Greens

www.first-greens.com  
8416 Harmony Road, Denton, MD 21629  
Caroline County

Shannon Makovsky, Owner  
firstgreens1@gmail.com, (410) 924-1816  
Glenn Makovsky, Owner  
firstgreens1@gmail.com, (410) 924-1816

**Business Description:** First Greens is a grower of premium living micro greens. Our micro greens are grown PURE with NO pesticides, NO insecticides, and NO soil, just filtered H2O and organic seeds. We grow to order for each individual customer.

**Desired Markets:** Farm Stands and/or Farmers' Market, Grocery Chains, Institutions (Hospitals, Schools, etc.), Restaurants

**Food Quality Programs:** MDA GAP Certification

**Products Available:** Arugula, Beets, Cabbage, Carrots, Cauliflower, Collards, Endive, Green Onions, Kale, Leeks, Lettuce, Mustard Greens, Onions, Peas, Sprouts

## Flying Dog Brewery

www.flyingdog.com  
4607 Wedgewood Boulevard, Frederick, MD 21703  
Frederick County

Kristin Hanna, Brewery Experience Manager  
kristin.hanna@flyingdog.com, (301) 694-7899  
Justin Tarnow, Flying Dog University Professor  
James Maravetz, VP of Marketing  
Tori Meissner, Events Manager

**Business Description:** Flying Dog Brewery is a craft brewery located in Frederick, Maryland. Founded in 1990 by George Stranahan and Richard McIntyre, it is the largest brewery in Maryland.

**Desired Markets:** Grocery Chains, Restaurants

**Products Available:** Locally brewed beer!

## Frederick County Sheep Breeders Association

www.fredericksheepbreeders.com  
Carroll County

Jennifer Smith, Owner, Basking Meadow Farm, Braddock Road, Woodbine, MD 21797  
baskingmeadowfarm@gmail.com, (571) 283-4302  
Charlotte Dutton

**Business Description:** Frederick County Sheep Breeders Association represents over 80 producers of sheep and goats throughout Maryland, Pennsylvania, and Virginia. Farm sizes range from a few to over 150 sheep/goats. Producers offer for sale breeding stock, lamb/goat meat, fleeces, pelts, roving, yarn, wool hand-knit products, and a variety of other livestock and products.

**Desired Markets:** Farm Stands and/or Farmers' Market, Grocery Chains, Institutions (Hospitals, Schools, etc.), Restaurants

**Farming Practices:** Conventional, Grass Fed/Pastured, Organic Exempt, **Food Quality Programs:** MDA GAP Certification, USDA GAP/GHP Certification, USDA Harmonized GAP Plus (GFSI), USDA Inspection (Beef, Pork, Lamb, Goat, Poultry), MDA Rabbit and Poultry On-Farm Slaughter/Processing Program, Maryland Egg Quality Assurance

**Products Available:** Beef, Chicken, Goat, Lamb, Pork, Rabbit, Cheese, Eggs, Milk



## FRESHPAPER

www.freshglow.co  
PO Box 880, Columbia, MD 21044  
Howard County

Carrie Murphy, Wholesale  
wholesale@freshglow.co, (424) 260-3368

**Business Description:** FRESHPAPER helps consumers, retailers and farmers reduce food waste naturally. Infused with organic spices, one FRESHPAPER sheet can be placed anywhere fresh produce is stored (bags, cartons, shipping containers, fridge drawers, directly in produce containers) to keep produce fresh for up to 2-4x longer. Recyclable, biodegradable and compostable, patented and award-winning FRESHPAPER has been featured in the New York Times, The Washington Post, The Today Show, Oprah, and many others.

**Desired Markets:** Farm Stands and/or Farmers' Market, Grocery Chains, Institutions (Hospitals, Schools, etc.), Restaurants

**Products Available:** FRESHPAPER for produce, FRESHPAPER for bread and baked goods.

## Frysta Pops

www.facebook.com/frystapops  
PO Box 1109, St Michaels, MD 21663  
Talbot County

Stefanie DeFiglia, Owner  
Frystapops@gmail.com, (410) 822-2276

**Business Description:** All-natural, small-batch ice pops made on Maryland's Eastern Shore. We start with the highest quality fruits, adding not-too-much sugar and other natural ingredients to create healthy, great-tasting treats that are dairy-free, gluten-free and soy-free. We use locally sourced fruits when possible, so our flavors change with the seasons. From child-friendly flavors like Watermelon or Mango, to the more adventurous Chilly Chili Peach or Blackberry Pear (infused with a little red wine), we appeal to all ages. We carry No Sugar Added options and Boozy Pops. Ask about our mini pops! They make perfect specialty cocktails!

**Desired Markets:** Farm Stands and/or Farmers' Market, Grocery Chains, Institutions (Hospitals, Schools, etc.), Restaurants

**Farming Practices:** Conventional

**Products Available:** Artisan ice pops, two sizes.

## Gotham Greens

www.gothamgreens.com  
810 Humboldt Street, Brooklyn, NY 11222  
New York City

Nicole Baum, Director of Marketing  
nicole@gothamgreens.com, (718) 935-0600  
Kristopher Marx, NE Sales Manager  
kristopher@gothamgreens.com  
Steve Gilbank, VP of Sales  
steve@gothamgreens.com

**Business Description:** Gotham Greens is a global pioneer in urban greenhouse agriculture and a leading consumer brand of premium-quality local produce and fresh food products. The company provides its diverse retail, restaurant, and foodservice customers with a local, reliable, year-round supply of salad greens, herbs and fresh food products grown under the highest standards of food safety and environmental sustainability. The company owns and operates over 170,000 ft of greenhouse across four facilities in New York and Chicago. Gotham Greens has 500,000 ft of greenhouse under development in five US states, including a 100,000+ft facility located in Baltimore County.

**Desired Markets:** Farm Stands and/or Farmers' Market, Grocery Chains, Institutions (Hospitals, Schools, etc.), Restaurants

**Products Available:** Arugula, Bok Choy, Lettuce, Mustard Greens. Our current lettuce and basil offerings include: Gourmet Lettuce Medley, Greenpoint Oak Leaf, Rooftop Red Oak Leaf, Tropicana Green Leaf, Summer Mix, Bok Choy, Butterhead Lettuce, Blooming Brooklyn Iceberg, Arugula, Romaine, Genovese + Thai Basil and Ugly Greens (a food waste initiative). We also sell a line of fresh food products including Classic, Vegan + Spicy Pesto as well as four salad dressings and dips which feature Gotham Greens Genovese Basil.

## Gunpowder Bison and Trading Company

www.gunpowderbison.com  
1270 Monkton Road, Monkton, MD 21111  
Baltimore County

Trevor Lewis, Owner  
orders@gunpowderbison.com, (410) 343-2277

**Business Description:** As a family-owned and operated farm, Gunpowder Bison & Trading Co. raises all-natural bison with no hormones or antibiotics, and all processing is done under USDA inspection. Our bison are pasture-raised prior to butchering and our meat is dry-aged to bring you a premium product. We offer a variety of bison meat including high quality steaks, roasts, sausages, hot dogs, ground bison, burgers and charcuterie. Retail customers can purchase our product in our farm store, select grocery stores throughout Maryland or on our website. Wholesale orders can be placed at orders@gunpowderbison.com or 410-983-3600.

**Desired Markets:** Farm Stands and/or Farmers' Market, Grocery Chains, Institutions (Hospitals, Schools, etc.), Restaurants

**Farming Practices:** Grass Fed/Pastured

**Products Available:** Bison

## HEX Ferments

www.hexferments.com  
Belvedere Square Market, 529 East Belvedere Ave,  
Baltimore, MD 21212

Meaghan Carpenter, Co-Owner, Food Alchemist  
hex@hexferments.com, (410) 775-5044

**Business Description:** HEX Ferments uses the traditional method of fermentation to preserve and transform local, organic produce into nourishing foods – presently unique sauerkrauts, kimchi, seasonal ferments, and kombucha tea. Fermented foods are in every culture, and for thousands of years have been an effective way to preserve the harvest and make food more digestible while detoxifying and enhancing nutrients. The effect of fermentation transforms foods to make flavors more complex, while adding naturally occurring probiotics to your diet. We are certified organic, B Corporation that

does not ferment in plastic and operates in a 100 percent wind-powered facility. More at [www.hexferments.com/pages/about-us](http://www.hexferments.com/pages/about-us)

**Desired Markets:** Grocery Chains, Institutions (Hospitals, Schools, etc.)

**Farming Practices:** Certified Organic

**Products Available:** Sauerkrauts, Kimchi, Seasonal Ferments, Kombucha Tea

## High Country Creamery and Market

www.highcountrycreameryandmarket.com  
97 Locker Lane, PO Box 299, Grantsville, MD 21536  
Garrett County

Linda Kling, Owner  
linda@hcccheese.com, (240) 979-0620

**Business Description:** Cow cheese producer.

**Desired Markets:** Grocery Chains, Institutions (Hospitals, Schools, etc.), Restaurants, Farming Practices: Conventional

**Products Available:** Cheese

## Hollywood Oyster Company

www.hollywoodoyster.com  
44149 Tranquility Farm Lane, Hollywood, MD 20636  
St. Marys County

Tal Petty, Farmer  
tal@hollywoodoyster.com, (301) 710-6396  
Na Petty  
na@hollywoodoyster.com

**Business Description:** Oyster farm; producer of Sweet Jesus and Hollywood Oysters.

**Desired Markets:** Grocery Chains, Institutions (Hospitals, Schools, etc.), Restaurants

**Products Available:** Premium farmed oysters.

## Honga Oyster Company

www.hongaoyster.com  
2102 Wingate Bishop Head Road, Toddville, MD 21672  
Dorchester County

Bill Cox, Owner  
bigbill107@gmail.com, (240) 447-4500

**Business Description:** Oyster aquaculture. We grow farm-raised oysters on our 20-acre lease on the Chesapeake Bay.

**Desired Markets:** Grocery Chains, Restaurants

**Farming Practices:** Conventional

**Products Available:** Oysters

## Hummingbird Farms, Inc.

www.facebook.com/HUMMINGBIRDFARMS.official/  
12319 Ridgely Road, Ridgely, MD 21660  
Caroline County

Jennifer Sturmer, President  
hbird@crosslink.net, (410) 634-2121

**Business Description:** Hydroponic tomato farm.

**Desired Markets:** Farm Stands and/or Farmers' Market, Grocery Chains, Institutions (Hospitals, Schools, etc.), Restaurants

**Farming Practices:** Conventional

**Food Quality Programs:** USDA Harmonized GAP Plus (GFSI)

**Products Available:** Beefsteak Tomatoes (Red, Yellow, Orange, Red Plum and Golden Plum), Cluster Tomatoes (Red, Yellow & Orange Cherry, Red & Yellow Grape), Miniature Plum Tomatoes, Heirloom Tomatoes, Edible Flowers in the spring.

## Koinonia Farm

www.koinoniaorganicfarm.com  
1400 Greenspring Valley Road, Stevenson, MD 21153  
Baltimore County

Raina Gover, Farm Manager  
koinoniaorganicfarm@yahoo.com, (410) 486-2405

**Business Description:** Oldest organic farm in Maryland producing a wide variety of local organic culinary herbs year round. Will be expanding to offer organic-raised lamb in 2019!

**Desired Markets:** Farm Stands and/or Farmers' Market, Grocery Chains, Institutions (Hospitals, Schools, etc.), Restaurants

**Farming Practices:** Certified Organic

**Food Quality Programs:** USDA GAP/GHP Certification

**Products Available:** Lamb, Culinary Herbs.

## Lands End Farm

23629 Lands End Road, Chestertown, MD 21620  
Kent County

Vinton Lawrence, Owner  
vlawrence@nets.com, (410) 778-1866, 505-470-1222  
Amy Brown, Partner, Product Development  
abrown@nets.com  
Albert Schaubert, Farm Manager  
pepsiandkaren@gmail.com  
Karen Schaubert

**Business Description:** Land's End Farm is a 600-acre, MDA-certified organic family farm in Chestertown, Maryland. We are licensed under MDDH as a processor of stone-ground, milled grain products, specifically cornmeal and whole grain corn, polenta, whole rye and heritage wheat flour. Our principal crops are corn, alfalfa hay, grass hay, wheat, rye, and barley, asparagus, sweet potatoes, Asian medicinal herbs, figs, currants, squash, grass-fed beef. Interested in establishing relationships with restaurants, bakers, brewers, distillers, and others to grow custom crops of grains, vegetables, and small fruits.

**Desired Markets:** Restaurants

**Farming Practices:** Grass Fed/Pastured, Certified Organic

**Products Available:** Asparagus, Blueberries, Currants, Figs, Squash, Strawberries, Sweet Potatoes, Beef, Black Walnuts, Pecans, Sunchokes, Currants



## Liberty Delight Farms

www.libertydelightfarms.com  
1633 Oakland Road, Reisterstown, MD 21136  
Baltimore County

Shane Hughes, Owner  
shane@libertydelightfarms.com, (410) 833-1796  
Lauren Taylor

**Business Description:** All-natural meat producer. Beef, pork, chicken, rabbit and eggs. Also producing dog treats.

**Desired Markets:** Farm Stands and/or Farmers' Market, Institutions (Hospitals, Schools, etc.), Restaurants

**Farming Practices:** Grass Fed/Pastured

**Food Quality Programs:** MDA Rabbit and Poultry On-Farm Slaughter/Processing Program Maryland Egg Quality Assurance

**Products Available:** Beef, Chicken, Lamb, Pork, Rabbit, Turkey, Eggs, Dog Treats

## Loveville Produce Auction

40454 Bishop Road Loveville, MD, 25641 Lone Spruce Lane, Mechanicsville, MD 20659

Donna Sasscer, St. Mary's Co. Economic Development  
St. Mary's County  
donna.sasscer@stmarysmd.com, (240) 309-4021  
Henry Stauffer  
Nathanial Stauffer

**Business Description:** Mennonite Auction – No phone, email, or website. Loveville Produce Auction is open February through December. A wide variety of produce is sold throughout the year along with cut flowers, bedding plants, firewood, and hay.

**Desired Markets:** Farm Stands and/or Farmers' Market, Grocery Chains, Restaurants

**Farming Practices:** Conventional, Certified Organic, Organic Exempt

**Food Quality Programs:** Maryland Egg Quality Assurance

**Products Available:** Apples, Apricots, Arugula, Asian Pears, Asparagus, Beets, Blackberries, Blueberries, Bok Choy, Broccoli, Brussel Sprouts, Cabbage, Carrots, Cauliflower, Cherries, Collards, Cucumbers, Currants, Daikon, Edamame Soybeans, Eggplant, Endive, Figs, Garlic, Grapes, Green Beans, Green Onions, Green

Peppers, Horseradish, Hot Peppers, Kale, Leeks, Lettuce, Lima Beans, Melons, Mushrooms, Mustard Greens, Nectarines, Okra, Onions, Parsnips, Peaches, Pears, Peas, Persimmons, Plums, Potatoes, Radishes, Raspberries, Rhubarb, Rutabagas, Salad Greens, Shallots, Spinach, Squash, Strawberries, Sweet Corn, Sweet Peppers, Sweet Potatoes, Swiss Chard, Tomatillos, Tomatoes, Turnips, Watermelons, Zucchini, Eggs, Firewood, hay, bedding plants, hanging baskets, cut flowers, handmade crafts.

## Lyon Distilling Co.

www.lyondistilling.com  
605 S Talbot Street, Unit 6, St Michaels, MD 21663  
Talbot County

Jaime Windon, CEO  
liquor@lyondistilling.com, (443) 333-9181

**Business Description:** Cane-to-glass craft distillery

**Desired Markets:** Farm Stands and/or Farmers' Market, Grocery Chains, Restaurants

**Products Available:** Rum, Whiskey

## Madhouse Oysters, LLC

www.madhouseoysters.com  
PO Box 181  
2405 Hoopers Island Road, Fishing Creek, MD 21634  
Dorchester County

Ted Cooney, Founder  
ted@madhouseoysters.com, (410) 310-4132

**Business Description:** Oyster aquaculture operation.

**Desired Markets:** Grocery Chains, Restaurants

**Products Available:** Premium Farmed Oysters

## Miller Farms

www.millerfarmsclinton.com  
10140 Piscataway Road, Clinton, MD 20735  
Prince George's County

Brad Miller, Sales Manager  
bpmiller14@gmail.com, (301) 399-0168  
Adam Miller, Production Manager

**Business Description:** Miller Farms is a 267-acre farm that has been family-owned and operated since 1879, offering a wide array of fresh fruits, crisp vegetables and much more. In addition to our farm, we have a direct farm market, a bakery offering delicious home-baked goods and handmade ice cream, a nursery abundant with beautiful annuals, perennials, vegetable plants and flowers, hardwood mulch and firewood.

**Desired Markets:** Farm Stands and/or Farmers' Market, Grocery Chains, Institutions (Hospitals, Schools, etc.), Restaurants

**Farming Practices:** Conventional

**Food Quality Programs:** MDA GAP Certification

**Products Available:** Apples, Asian Pears, Asparagus, Beets, Blackberries, Blueberries, Broccoli, Brussel Sprouts, Cabbage, Cantaloupes, Carrots, Cauliflower, Celery, Cherries, Collards, Cucumbers, Eggplant, Grapes, Green Beans, Green Onions, Green Peppers, Hot Peppers, Kale, Lettuce, Melons, Mustard Greens, Nectarines, Onions, Peaches, Pears, Plums, Potatoes, Raspberries, Rutabagas, Spinach, Squash, Strawberries, Sweet Corn, Sweet Peppers, Sweet Potatoes, Tomatillos, Tomatoes, Turnips, Watermelons, Zucchini, Eggs, Ice Cream

## Natures Garlic Farm

www.naturesgarlicfarm.com  
10610 Old Cordova Road, Easton, MD 21601  
Talbot County

Jim Reinhardt, Owner  
sales@naturesgarlicfarm.com, (410) 829-1718

**Business Description:** Natures Garlic Farm is Maryland's largest grower of Hardneck Garlic with over 20 acres in production. We grow high quality Hardneck Garlic without the use of herbicides or pesticides while using organic and sustainable farming practices. We believe healthy soils grow nutritious and delicious produce. We provide garlic scapes, fresh green garlic bunches and garlic bulbs to wholesalers, grocery stores, markets, produce stands, farm markets, CSAs, and restaurants in Maryland, Delaware, Virginia and Washington, DC. We maintain USDA Certifications for GAP Harmonized Field Operations and Harvesting as well as Harmonized Post Harvest Operations.

**Desired Markets:** Farm Stands and/or Farmers' Market, Grocery Chains, Institutions (Hospitals, Schools, etc.), Restaurants

**Food Quality Programs:** USDA GAP/GHP Certification

**Products Available:** Garlic, Garlic Scapes, Fresh Green Garlic, and Garlic Bulbs.

## Not Joe Mamas Sauce

www.notjoemamas.com  
1616 Trawler Lane, Annapolis, MD 21409  
Anne Arundel County

Joe Sudo, Owner  
joe@notjoemamas.com, (410) 279-9847

**Business Description:** Not Joe Mama's is a purveyor of a unique line of all-natural, gluten-free, non-GMO sauces. It's not a hot sauce, not a bar-b-que sauce, it's something in between. Often called "an everything sauce," our varieties include Original, Sweet Onion, Cajun Blue Cheese, and Bourbon with a Bite.

**Desired Markets:** Farm Stands and/or Farmers' Market, Grocery Chains, Restaurants

**Farming Practices:** Conventional

**Products Available:** Sauces, Hot Peppers, Butter, Cheese

## Olmo Bros Nursery & Farm

1704 Old Generals Highway, Annapolis, MD 21401  
Anne Arundel County

Larry Olmo, Farm Manager  
larry@olmobros.com , (410) 703-5440

**Business Description:** Family farm specializing in growing herbs/vegetables plants/produce primarily from imported Italian seeds, plus figs, Asian pears, blueberries, apples and peaches. In addition, manufacturer of fresh Mozzarella, fresh Ricotta both plain and basil-infused, and made-to-order cannoli using crema produced from fresh ricotta. Plus other Italian specialties.

**Desired Markets:** Farm Stands and/or Farmers' Market, Grocery Chains, Institutions (Hospitals, Schools, etc.)

**Farming Practices:** Conventional

**Products Available:** Apples, Arugula, Asian Pears, Asparagus, Beets, Blueberries, Broccoli, Brussel Sprouts, Cabbage, Carrots, Cauliflower, Cucumbers, Eggplant, Figs, Garlic, Green Beans, Green Onions, Green Peppers, Hot Peppers, Kale, Leeks, Lettuce, Onions, Peaches, Pears, Peas, Potatoes, Radishes, Salad Greens, Spinach, Squash, Sweet Corn, Sweet Peppers, Swiss Chard, Tomatoes, Zucchini, Cheese, Eggs, Cannoli

## Open Seas Coffee

www.openseascoffee.com  
100 Pier Avenue, Stevensville, MD 21666  
Queen Anne's County

Bryce Roszell, Owner  
bryce@openseascoffee.com, (443) 924-6045  
Andrew Wackett, Head Trainer/Production Roaster  
andrew@openseascoffee.com

**Business Description:** Small-batch coffee roastery focusing on high quality and sustainable coffee relationships. With the owner also working as head roaster, each batch is roasted with your cafe and restaurant's needs in mind. We specialize in helping businesses differentiate from those around them, therefore increasing sales and driving repeat customers.

**Desired Markets:** Farm Stands and/or Farmers' Market, Grocery Chains, Restaurants

**Products Available:** Coffee, Tea

## Orinoco Coffee & Tea

www.OrinocoCoffeeandTea.com  
8265 Patuxent Range Road, Suite L, Jessup, MD 20794  
Howard County

Charlotte Berry, Business Assistant  
cberry@orinococoffeeandtea.com, (410) 312-5292  
Steve Izzo, Account Manager for Maryland  
sizzo@orinococoffeeandtea.com  
Kendra Gibson, Account Manager for DC and NOVA  
kgibson@orinococoffeeandtea.com

**Business Description:** Orinoco is a family-owned small business located in Maryland that provides on-demand roasting. Our goal is to consistently provide excellent coffee and tea products to retailers, local coffee shops, and multi-store grocery chains. We also pride ourselves in providing wide-range of Fair Trade Organic coffees. We service many private label accounts across the nation. If your gourmet shop or store serves only the best, consider adding Orinoco to your product line.

**Desired Markets:** Farm Stands and/or Farmers' Market, Grocery Chains, Institutions (Hospitals, Schools, etc.), Restaurants

**Farming Practices:** Certified Organic

**Products Available:** Roast-to-Order Coffee, Organic, Non-Organic, Decaf, Flavored Coffees



## Pennland Pure

www.pennlandpure.com  
1258 Maryland Ave, Hagerstown, MD 21740  
Washington County

Stephanie Helms, Sales and Marketing Administrator  
shelms@lancopennland.com, (301) 393-5554  
Tracy Covalt, Sales  
Kate Vergeront, Supply Chain Manager

**Business Description:** Pennland Pure cheese plant, nestled in the hills of Hancock, Maryland, is a collaborative of 650 farm owners who have been raised to treat their land and livestock with respect and take pride in purveying products of the highest quality. We believe in a way of living that reflects and celebrates the heritage, industriousness and integrity of the families who work the land they inherited from their ancestors. Our cheeses are made simply and sustainably from the highest-grade dairy products and very little else.

**Desired Markets:** Farm Stands and/or Farmers' Market, Grocery Chains, Institutions (Hospitals, Schools, etc.), Restaurants

**Farming Practices:** Conventional, Grass Fed/Pastured

**Products Available:** Cheese

## Phillips Wharf Environmental Center

www.phillipswharf.org  
PO Box C  
6129 Tilghman Island Road, , Tilghman, MD 21671  
Talbot County

Kelley Cox, Executive Director  
kelley@pwec.org, (410) 310-0312  
Josh Poore, CFO  
support@pwec.org  
Kelley Phillips Cox, Executive Director  
kelley@pwec.org

**Business Description:** Environmental education and shellfish aquaculture training. Fisherman's Daughter brand oysters.

**Desired Markets:** Farm Stands and/or Farmers' Market, Grocery Chains, Institutions (Hospitals, Schools, etc.), Restaurants

**Products Available:** Oysters

## Quality Ethnic Foods Inc.

www.qualityethnicfoods.com  
1430 Desoto Road, Baltimore, MD 21230  
Baltimore City

Shah Rahman, President  
ahson@qefinc.com, (410) 636-3002  
Ahson Rehman, Operations Manager  
Iqbal Syed, Head of Sales  
Khaleel Rahman, Sales Representative

**Business Description:** Quality Ethnic Foods Inc. is committed to providing halal food for you and your family. Our company started 15+ years ago with one aim which is to provide Hand Zabiha Halal meat. We started with just a few classic Jamaican foods such as beef patties and Dhal Puri Roti, but now we have expanded our product line and provide quality halal foods native to other countries like pepperoni, franks, gyro, beef strips, samosas and many other products. These products became staples in our customer's kitchens.

**Desired Markets:** Grocery Chains, Institutions (Hospitals, Schools, etc.), Restaurants

**Products Available:** Hot Peppers, Beef, Chicken, Goat, Lamb, Turkey, Veal

## Rise Up Coffee Roasters

www.riseupcoffee.com  
618 Dover Road, Easton, MD 21601  
Talbot County

Mark Airey, Wholesale Relationship Specialist  
mark@riseupcoffee.com, (877) 474-7387  
Timothy Cureton, Founder & CEO  
Alli Ensmenger, GM

**Business Description:** Established in 2005, Rise Up Coffee is an independent, small-batch coffee roaster dedicated to sustainable coffees (Certified Fair Trade + Organic). We recently received national recognition as Maryland's Best Coffee. At this year's show, Rise Up will be launching Organic Cold Brew four-packs and new retail coffee packaging. As a relationship-driven company, establishing healthy wholesale relationships is a major focus at Maryland's Best.

**Desired Markets:** Grocery Chains, Restaurants

**Farming Practices:** Certified Organic

**Products Available:** Coffee

## Roseda Beef/Old Line Custom Meat Company

www.rosedabeef.com  
1600 South Monroe St., Baltimore, MD 21230  
Baltimore City

Ed Burchell, Partner  
eddie@olcmc.com, (410) 962-5530  
Mike Brannon, Vice President  
mike@olcmc.com  
Lucy Boudris  
lboudris@gmail.com

**Business Description:** Roseda Black Angus Farm is a farm, not a factory. Founded in 1996 and located in Monkton, Maryland, we raise local, all-natural Black Angus cattle that are pasture-raised and grain-finished. Our beef is dry aged the old fashioned way for fourteen to twenty-one days to ensure a consistent and extraordinary eating experience for our customers. We work with local cooperative farmers to produce a sustainable and source-verified product that never uses growth enhancers, routine antibiotics or hormones ever. Recognized consistently as the region's finest, we encourage you to Just Taste Our Story.

**Desired Markets:** Grocery Chains, Institutions (Hospitals, Schools, etc.), Restaurants

**Food Quality Programs:** USDA Inspection (Beef, Pork, Lamb, Goat, Poultry)

**Products Available:** Beef

## Shepherds Manor Creamery

www.shepherdsmanorcreamery.com  
1126 Slingluff Road, New Windsor, MD 21776  
Carroll County

Colleen Histon, Owner/Cheese Maker  
shepherdsmanorcreamery@verizon.net, (240) 388-6633

**Business Description:** Michael and Colleen Histon own and operate the first and only sheep's milk dairy in Maryland. It is a total farmstead operation, which means we raise our sheep, we milk on the farm, and Colleen produces both artisan raw and pasteurized sheep-milk cheeses. We sell to restaurants, orchards, wineries, and at farmers' markets in Maryland, Virginia, and the District of Columbia. Colleen also makes sheep's milk soap from the milk! We welcome visitors by appointment. We host tours on the farm for individuals and groups, and mentor future shepherds looking to consider this challenging farm adventure!

**Desired Markets:** Grocery Chains, Institutions (Hospitals, Schools, etc.), Restaurants

**Products Available:** Cheese, Soap

## Schroll's Gourmet Food, LLC

www.schrolls.net  
3715 4th Ave, Edgewater, MD 21037  
Anne Arundel County

Jerry Joyce, Owner  
schrollsfood@gmail.com, (446) 995-3363  
Mary Anne Joyce  
schrollsfood@gmail.com, (446) 995-3363

**Business Description:** Sweet sauerkraut producer.

**Desired Markets:** Farm Stands and/or Farmers' Market, Grocery Chains, Institutions (Hospitals, Schools, etc.), Restaurants

**Products Available:** Sauerkraut

## Shlagel Farms LLC.

www.shlagelfarms.com  
12850 Shlagel Road, Waldorf, MD 20601  
Charles County

Russell Shlagel, Owner  
info@shlagelfarms.com, (301) 645-4554  
Karl Shlagel  
kshlagel@hotmail.com  
Luke Shlagel  
info@shlagelfarms.com

**Business Description:** A family farm operating for 107 years. We have a pick-your-own strawberry patch in May and a pick-your-own pumpkin patch in October. We also grow a large variety of fruits and vegetables that we retail at local farmers markets and wholesale to several chain stores.

**Desired Markets:** Farm Stands and/or Farmers' Market, Grocery Chains, Institutions (Hospitals, Schools, etc.), Restaurants

**Farming Practices:** Conventional

**Food Quality Programs:** USDA GAP/GHP Certification, USDA Harmonized GAP Plus (GFSI), USDA Inspection (Beef, Pork, Lamb, Goat, Poultry), Maryland Egg Quality Assurance

**Products Available:** Apples, Asparagus, Beets, Blackberries, Blueberries, Broccoli, Cabbage, Cantaloupes, Cauliflower, Collards, Cucumbers, Eggplant, Garlic, Green Beans, Green Peppers, Hot Peppers, Kale, Leeks, Lettuce, Lima Beans, Melons, Onions, Peaches, Radishes, Salad Greens, Spinach, Squash, Strawberries, Sweet Corn, Sweet Peppers, Sweet Potatoes, Swiss Chard, Tomatillos, Tomatoes, Turnips, Watermelons, Zucchini, Beef, Chicken, Pork, Eggs

## Smoketown Brewing Station

www.smoketownbrewing.com  
223 W Potomac St, Brunswick, MD 21716  
Frederick County

Jake Blackmon, Operations Manager  
jake@smoketownbrewing.com, (301) 834-4828

**Business Description:** We are a microbrewery located in Brunswick, MD in the old town firehall. We serve 24 beers on tap.

**Desired Markets:** Grocery Chains, Restaurants

**Farming Practices:** Conventional

**Products Available:** Craft beer

## Somerset Bay Foods

12138 Carol Lane, Princess Anne, MD 21853  
Somerset County

Richard Evanusa, Vice President  
rmevanusa@juno.com, (410) 651-4505  
Jacob McFarland, Sales Associate

**Business Description:** Manufacturing a fish marinade, shrimp marinade and an all-purpose seasoning blend "SEASONIT!"

**Desired Markets:** Grocery Chains

**Farming Practices:** Conventional

**Products Available:** Fish Marinade, Shrimp Marinade, All-Purpose Seasoning



## South Mountain Creamery

www.southmountaincreamery.com  
8305 Bolivar Road, Middletown, MD 21717  
Frederick County

Joey Blank, Wholesale Sales  
joey.blank@smcdairy.com, (301) 371-8565  
Kyrie Stewart, Customer Service  
Kyrie.Stewart@smcdairy.com  
Lanie Swanhart, Marketing and Design  
Lanie.Swanhart@smcdairy.com

**Business Description:** Family-owned and operated dairy farm since 1981 that offers farm fresh milk, ice cream, cheese, and many other dairy and non-dairy farm-direct foods.

**Desired Markets:** Grocery Chains, Institutions (Hospitals, Schools, etc.), Restaurants

**Farming Practices:** Grass Fed/Pastured

**Food Quality Programs:** USDA Inspection (Beef, Pork, Lamb, Goat, Poultry), Maryland Egg Quality Assurance

**Products Available:** Beef, Butter, Cheese, Eggs, Ice Cream, Milk, Yogurt

## Springfield Farm

www.ourspringfieldfarm.com  
16701 Yeoho Road, Sparks Glencoe, MD 21152  
Baltimore County

Valerie Lafferty, Wholesale Accounts Manager  
mail@ourspringfieldfarm.com, (410) 472-0738  
Kyle Leibe, Farm Assistant  
mail@ourspringfieldfarm.com

**Business Description:** Small family farm, 17 generations, raising all-natural/free range/grass-fed pastured animals. No hormones, no antibiotics, and no appetite stimulants are given to our animals. Our feed is locally sourced, locally grown, non-GMO, custom-ground on demand per our recipe.

**Desired Markets:** Farm Stands and/or Farmers' Market, Grocery Chains, Restaurants

**Farming Practices:** Grass Fed/Pastured

**Food Quality Programs:** USDA Inspection (Beef, Pork, Lamb, Goat, Poultry)

**Products Available:** Beef, Chicken, Lamb, Pork, Turkey, Eggs

## Stoecker Farms Produce, LLC

www.stoeckerfarms.com  
2501 Gibson Road, White Hall, MD 21161  
Baltimore County

Charles Stoecker, Owner  
stoecker.farms@gmail.com, (410) 340-2372

**Business Description:** A 129-year-old family farm specializing in vegetables and small fruits including greens, ethnic vegetables and heirloom tomatoes. We follow organic practices and integrated pest management.

**Desired Markets:** Farm Stands and/or Farmers' Market, Grocery Chains, Institutions (Hospitals, Schools, etc.), Restaurants

**Food Quality Programs:** MDA GAP Certification

**Products Available:** Arugula, Asparagus, Beets, Blackberries, Blueberries, Bok Choy, Broccoli, Brussel Sprouts, Cabbage, Cantaloupes, Carrots, Cauliflower, Celery, Collards, Cucumbers, Daikon, Eggplant, Endive, Garlic, Green Beans, Green Onions, Green Peppers, Hot Peppers, Kale, Leeks, Lettuce, Lima Beans, Melons, Mustard Greens, Okra, Onions, Parsnips, Peas, Potatoes, Radishes, Raspberries, Rhubarb, Rutabagas, Salad Greens, Spinach, Squash, Strawberries, Sweet Corn, Sweet Peppers, Sweet Potatoes, Swiss Chard, Tomatillos, Tomatoes, Turnips, Watermelons, Zucchini

## Tobacco Barn Distillery

www.tobaccobarndistillery.com  
24460 Hollywood Road, Hollywood, MD 20636  
St. Mary's County

Scott Sanders, Partner  
scott@tobaccobarndistillery.com, (240) 243-9151  
Sean Coogan

**Business Description:** Tobacco Barn Distillery is one of a select few "farm-to-bottle" producers of craft-distilled products in America today. We make hand-crafted premium bourbon from corn we grow on site and combine with other locally sourced grains and ingredients. All mashing, fermenting, distilling and bottling, from start to finish, is done on the farm. Our commitment to the environment embodies solar, geothermal and intensive water recycling processes to preserve the quality of life for all who live on the Chesapeake Bay watershed. Spent grains are used by local farmers as a healthy source of high-protein livestock feed.

**Desired Markets:** Farm Stands and/or Farmers' Market, Restaurants

**Farming Practices:** Conventional

**Products Available:** Bourbon

## Twin Valley Distillers

www.twinvalleydistillers.com  
711 E Gude Drive, Rockville, MD 20850  
Montgomery County

Edgardo Zuniga, Manager  
e.zuniga@twinvalleydistillers.com, (240) 421-1115

**Business Description:** Manufactory of distillery of alcohol. We make bourbons, whiskeys, and rums.

**Desired Markets:** Farm Stands and/or Farmers' Market, Grocery Chains, Restaurants

**Products Available:** Bourbon, Whiskey, Rum

## The Urban Winery

www.theurbanwinery.com  
949 Bonifant Street, Silver Spring, MD 20910  
Montgomery County

Damon Callis, Owner  
info@theurbanwinery.com, (301) 585-4100

**Business Description:** Maryland's first urban winery.  
**Desired Markets:** Farm Stands and/or Farmers' Market, Grocery Chains, Institutions (Hospitals, Schools, etc.), Restaurants

**Products Available:** Wine

## Wagner's Meats LLC

www.wagnermeats.com  
604 N. Main Street, PO Box 51, Mount Airy, MD 21771  
Carroll County

Michael, Wagner, Controlling Member  
m.wagner@wagnersmeats.com, (301) 829-0500  
Martin Herdt, Wholesale Manager

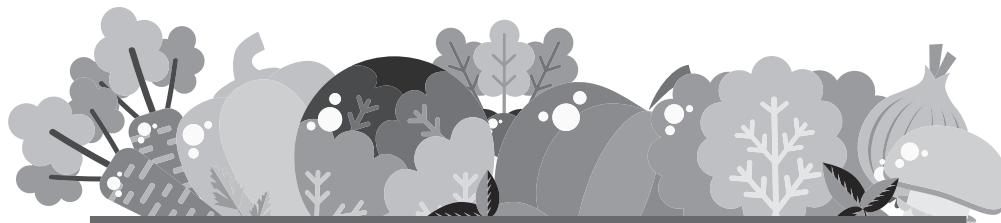
**Business Description:** Local butcher shop offering local, fresh meats. Farm-to-table. USDA-regulated, slaughter, wholesale, retail and processing

**Desired Markets:** Farm Stands and/or Farmers' Market, Restaurants

**Farming Practices:** Conventional

**Food Quality Programs:** USDA Inspection (Beef, Pork, Lamb, Goat, Poultry)

**Products Available:** Broccoli, Green Beans, Potatoes, Beef, Chicken, Goat, Lamb, Pork, Veal, Cheese, Eggs, Milk



## BUYERS/DISTRIBUTERS

A & H Quality Foods  
Anne Arundel County  
Public Schools  
Assateague Crab House  
B. Green - Green Valley  
Marketplace  
Balduccis  
Baltimore City Public  
Schools  
Blue Wind Gourmet  
Bradmer Foods  
Bread and Butter Kitchen  
Brenda's Pizzeria  
Calvert County Public  
Schools  
Capital Area Food Bank  
Capital Seaboard  
Caroline County Public  
Schools  
Carrol's Creek Cafe  
Chart House  
The Class Produce  
Coastal Sunbelt Produce  
Community Foodworks  
The Comus Inn  
Crownsville Gardens  
Cup Cafe  
Dawson's Market  
Denson's Grocery and R&B  
Oyster Bar

Dig Inn  
Eat Sprout  
Eddie's of Roland Park  
Edward G. Rahll & Sons  
Frederick County Public  
Schools  
Fully Grown LLC  
G. Cefalu & Bro. Inc.  
Gertrude's  
Greenbelt Co-op  
Supermarket & Pharmacy  
Gypsy Bar LLP  
Harris Teeter  
Home Grown Cafe  
Infusion Hot Sauce  
Company  
Keany Produce & Gourmet  
Kent Island Farmers  
Market  
Latitude Seafood Co.  
Laughing Crab Catering  
Level - Small Plates Lounge  
Lewnes' Steakhouse  
MeatCrafters, Inc.  
MOM's Organic Market  
Oakley's Farm Market  
Olney Farmers Market  
Pairings Bistro  
The Palate Pleasers

PD/BA LLC  
Preserve  
Produce Source Partners  
Pure Wine Cafe  
Queen Anne Farm Inc.  
Ricciutis Kitchen  
Riva Gardens  
River Bend Bistro  
ROCKLANDS Barbeque  
and Grilling Company  
Rooster & Hen  
SAGE Dining Services  
Sam's on the Waterfront  
Santoni's Marketplace  
& Catering  
Saval Foodservice  
Shore Gourmet  
Slate farm Brewery  
St. Mary's County Public  
Schools  
Sudano's Produce  
Tom Lange Co.  
UMES  
Vin 909 Winecafe  
Washington's Green Grocer  
Wonderland Coffee and  
Lounge



## A & H Quality Foods

www.pescadeli.com  
4215B Howard Avenue, Kensington, MD 20895  
Montgomery County

Alonso Roche, Culinary Director of Retail  
leichtner@anhmarket.com, (301) 363-0747

**Business Description:** Food retailer.

**Preferred Farming Practices:** Conventional, Grass Fed/  
Pastured, Certified Organic

**Products Needed:** All Fruits and Vegetables, All Meats,  
All Seafood

## Anne Arundel County Public Schools

www.aacps.org  
2666 Riva Road, Suite 100, Annapolis, MD 21401  
Anne Arundel County

Dane Emery, Area Specialist  
dmemery@aacps.org, (410) 222-5900  
Ken Simcox, Area Specialist, ksimcox@aacps.org  
Ashley Hazenstab, Area Specialist, ahazenstab@aacps.org

**Business Description:** School system.

**Preferred Farming Practices:** Conventional

**Food Quality Programs Required:** MDA GAP  
Certification, USDA GAP/GHP Certification

**Products Needed:** All Fruits and Vegetables, Chicken,  
Turkey

## Assateague Crab House

12511 Windsor Rd., Ocean City, MD 21842  
Worcester County

John Van Fossen, Owner  
jvf3877@aol.com, (443) 235-2504  
Lorraine Van Fossen, Owner

**Business Description:** Seasonal, full-service crab house.

**Preferred Farming Practices:** Conventional

**Products Needed:** Blueberries, Cabbage, Celery,  
Cucumbers, Garlic, Green Beans, Green Peppers, Kale,  
Lettuce, Mushrooms, Onions, Potatoes, Radishes, Salad  
Greens, Tomatoes, Beef, Chicken, All Seafood

## B. Green - Green Valley Marketplace

1300 S Monroe Street, Baltimore, MD 21230  
Baltimore City

Rodney Sheetz, Produce Director  
Rodney.sheetz@bgreenco.com, (443) 619-9830  
Rick Rodgers, COO  
rjrodgers@bgreenco.com, (443) 619-9830

**Business Description:** Wholesale and retail grocer.

**Preferred Farming Practices:** Conventional, Certified  
Organic

**Food Quality Programs Required:** MDA GAP  
Certification, USDA GAP/GHP Certification

**Products Needed:** All Fruits and Vegetables, All Meats,  
All Seafood

## Balduccis

700 Lanidex Plaza, Parsippany, NJ 07054  
Essex County

Paul Hamilton, Produce Buyer  
phamilton@kingssm.com, (973) 463-6497

**Business Description:** Retail grocery.

**Products Needed:** All Fruits and Vegetables, All Meats,  
All Seafood

## Baltimore City Public Schools

200 E North Ave., Baltimore, MD 21218  
Baltimore City

Elizabeth Marchetta, Executive Director, Food and  
Nutrition Services  
eamarchetta@bcps.k12.md.us, (410) 736-9170

**Business Description:** We serve over 100,000 meals  
daily at 180 school sites.

**Preferred Farming Practices:** Grass Fed/Pastured,  
Certified Organic

**Food Quality Programs Required:**

**Products Needed:** All Fruits and Vegetables, Beef, Bison,  
Chicken, Turkey, Crab Meat

## Blue Wind Gourmet

www.bluewindgourmet.com  
22803 Gunston Drive, Lexington Park, MD 20653  
St. Marys County

Dana Rebarchick, Owner  
dana@bluewindgourmet.com, (301) 904-1795

**Business Description:** Wine shop and deli.  
**Preferred Farming Practices:** Grass Fed/Pastured, Certified Organic

**Products Needed:** All Fruits and Vegetables, Arugula, Beets, Blueberries, Broccoli, Brussel Sprouts, Cabbage, Cantaloupes, Cauliflower, Cherries, Eggplant, Garlic, Kale, Mushrooms, Onions, Radishes, Raspberries, Rhubarb, Spinach, Sprouts, Strawberries, Sweet Potatoes, Tomatoes, Zucchini, Chicken, Crab Meat

## Bradmer Foods

102 Woodbrook Lane, Baltimore, MD 21212  
Baltimore City

Adam Borden, Partner  
adam.borden@bradmer.com, (443) 570-8102

**Business Description:** Working with retail and manufacturing partners on improved sourcing.  
**Preferred Farming Practices:** Grass Fed/Pastured, Certified Organic  
**Food Quality Programs Required:** USDA Inspection (Beef, Pork, Lamb, Goat, Poultry)

**Products Needed:** All Fruits and Vegetables, All Meats, All Seafood

## Bread and Butter Kitchen

www.breadandbutterkitchen.com  
303 Second Street, Suite A, Annapolis, MD 21403  
Anne Arundel County

Monica Alvarado, Owner/Chef  
monica@breadandbutterkitchen.com, (410) 202-8680

**Business Description:** Open seven days a week for breakfast and lunch, Bread and Butter Kitchen features local ingredients throughout our menu. We also carry local products for retail purposes.  
**Preferred Farming Practices:** Conventional, Grass Fed/Pastured, Certified Organic

**Products Needed:** All Fruits and Vegetables, Beef, Bison, Chicken, Lamb, Pork, Turkey, Crab Meat,

## Brenda's Pizzeria

www.brendaspizzeria.com  
21311 Garrett Highway, Oakland, MD 21550  
Garrett County

Brenda McDonnell, Owner  
brenda@brendaspizzeria.com, (301) 387-1007  
Jean Thomas, Manager, Trader's Coffee House, jean@traderscoffeehouse.com  
Jeany Blamble, Manager, Brenda's Pizzeria jeany@brendaspizzeria.com  
Melissa Sines, Asst Manager Trader's Coffee House melissa@traderscoffeehouse.com  
Melissa Nazelrod, Manager Ace's Run Restaurant & Pub melissa@acesrun.com  
Jesse Howell, Chef Ace's Run Restaurant & Pub  
Sheila Howell, Ace's Run Restaurant & Pub

**Business Description:** Restaurant.  
**Preferred Farming Practices:** Conventional Grass Fed/Pastured, Certified Organic  
**Food Quality Programs Required:** USDA Inspection (Beef, Pork, Lamb, Goat, Poultry), Maryland Egg Quality Assurance

**Products Needed:** All Fruits and Vegetables, Beef, Chicken, Lamb, Pork, Veal, All Seafood

## Calvert County Public Schools

1305 Dares Beach Rd., Prince Frederick, MD 20678  
Calvert County

Valarie Parmer, Dietitian/Nutrition Specialist  
pamerv@calvertnet.k12.md.us, (443) 550-8684  
Donald Knode, Child Nutrition Program Supervisor  
knoded@calvertnet.k12.md.us, (443) 550-8684

**Business Description:** Foodservice for K-12 school system.

**Preferred Farming Practices:** Conventional

**Products Needed:** Broccoli, Cauliflower, Celery, Cucumbers, Green Peppers, Lettuce, Spinach, Tomatoes

## Capital Area Food Bank

4900 Puerto Rico Ave., NE, Washington, DC 20017

Ronny Faragasso, Head of Food Procurement  
rfaragasso@capitalareafoodbank.org, (202) 644-9886

**Business Description:** Food Bank (non-profit food distributor).

**Preferred Farming Practices:** Conventional

**Food Quality Programs Required:** USDA Inspection (Beef, Pork, Lamb, Goat, Poultry)

**Products Needed:** Apples, Broccoli, Cabbage, Cantaloupes, Carrots, Cauliflower, Celery, Collards, Cucumbers, Eggplant, Green Beans, Green Peppers, Kale, Lettuce, Melons, Onions, Parsnips, Peaches, Potatoes, Radishes, Rutabagas, Squash, Sweet Corn, Sweet Peppers, Sweet Potatoes, Tomatoes, Turnips, Watermelons, Zucchini, Chicken

## Capital Seaboard

7540 Assateague Drive, Jessup, MD 20794  
Howard County

Steve Vilnit, Vice President of Marketing  
svilnit@capitalseaboard.com, (410) 279-7951

**Business Description:** Distributor of seafood, produce, and cheese.

**Preferred Farming Practices:** Conventional, Certified Organic

**Food Quality Programs Required:** MDA GAP Certification, USDA GAP/GHP Certification, USDA Harmonized GAP Plus (GFSI)

**Products Needed:** All Fruits and Vegetables, All Seafood

## Caroline County Public Schools

414 Gay Street, Denton, MD 21629  
Caroline County

Beth Brewster, Food Service Supervisor  
brewster.amanda@ccpsstaff.org, (410) 479-3261

**Business Description:** Public school cafeterias.

**Preferred Farming Practices:** Conventional, Grass Fed/Pastured

**Food Quality Programs Required:** USDA Inspection (Beef, Pork, Lamb, Goat, Poultry)

**Products Needed:** All Fruits and Vegetables, Sweet Corn, Beef, Chicken

## Carrol's Creek Cafe

www.carrolscreek.com  
410 Severn Ave., Annapolis, MD 20711  
Anne Arundel County

Richard McClure, General Manager  
rmcclure@carrolscreek.com, (410) 263-8102  
Jeffery Jacobs, Owner  
jjacobs@carrolscreek.com, (410) 263-8102  
Ricardo Bello, Chef  
rbello@carrolscreek.com, (410) 263-8102

**Business Description:** Restaurant.

**Preferred Farming Practices:** Conventional, Grass Fed/  
Pastured, Certified Organic

**Products Needed:** All Fruits and Vegetables, All Meats,  
All Seafood

## Chart House

www.chart-house.com  
300 Second St., Annapolis, MD 21403  
Anne Arundel County

Chris Lacasse, Executive Chef  
chrislacasse14@gmail.com, (410) 268-7166

**Business Description:** Restaurant serving seafood and  
steakhouse fare in a classy setting with view.

**Preferred Farming Practices:** Conventional, Grass Fed/  
Pastured

**Food Quality Programs Required:** MDA GAP  
Certification, USDA GAP/GHP Certification, USDA  
Harmonized GAP Plus (GFSI)

**Products Needed:** All Fruits and Vegetables, All Seafood

## The Class Produce

8477 Dorsey Run Road, PO Box 2003, Jessup, MD 20794  
Howard County

Jonny Class, Buyer  
jonclass@classproduce.com, (410) 799-5700  
Daniel Ehm, Buyer  
dehm@classproduce.com, (410) 799-5700

**Business Description:** Wholesale distributor.

**Preferred Farming Practices:** Conventional, Certified  
Organic

**Food Quality Programs Required:** MDA GAP  
Certification, USDA GAP/GHP Certification

**Products Needed:** All fruits and vegetables

## Coastal Sunbelt Produce

www.coastalsunbelt.com/homegrownhub  
9001 Whiskey Bottom Road, Laurel, MD 21723  
Howard County

Jaci Daly, Local Food Buyer  
jdaly@coastalsunbelt.com, (717) 634-0982  
Jason Lambros, VP of Food  
jlambros@coastalsunbelt.com, (301) 617-4352  
Meg Holt, Dairy Manager  
mholt@coastalsunbelt.com

**Business Description:** Coastal Sunbelt has been  
sourcing and delivering local produce in the Mid-Atlantic  
for over 20 years. The Homegrown Hub is our way  
of connecting local farms and food businesses of all  
types and sizes to our customers – restaurants, schools,  
and retailers. We market local growers' products to  
our customers throughout the Mid-Atlantic with an  
emphasis on the Baltimore and DC Metro areas. We are  
always looking for great local farms to work with. For  
more information, visit the Homegrown Hub website at  
www.coastalsunbelt.com/HomegrownHub.

**Preferred Farming Practices:** Conventional, Certified  
Organic

**Food Quality Programs Required:** MDA GAP  
Certification

**Products Needed:** All fruits and vegetables



## Community Foodworks

www.community-foodworks.org  
1380 Monroe Street NW, Washington, DC 20011

Julian Kroboth, Procurement Manager  
jkroboth@cfwdc.org, (434) 409-0199

**Business Description:** Nonprofit organization that aggregates and distributes local produce to low-access areas of D.C.

**Preferred Farming Practices:** Conventional, Certified Organic

**Food Quality Programs Required:**

**Products Needed:** All fruits and vegetables

## The Comus Inn

www.comusinn.com  
23900 Old Hundred Rd., Dickerson, MD 20842  
Montgomery County

Elise Wendland, Chef  
elise.wendland@gmail.com, (301) 349-5100

**Business Description:** Fine dining and event restaurant.

**Preferred Farming Practices:** Grass Fed/Pastured

**Food Quality Programs Required:** USDA Inspection (Beef, Pork, Lamb, Goat, Poultry), Maryland Egg Quality Assurance

**Products Needed:** All Fruits and Vegetables, Beef, Bison, Chicken, Duck, Gamebird, Lamb, Pork, Rabbit, Turkey, Veal, Crab Meat

## Crownsville Gardens

1241 Generals Hwy, Crownsville, MD 21032  
Anne Arundel County

Delia Edelmann, Owner/Buyer  
freestatebees@gmail.com, (410) 923-9800

**Business Description:** Garden center, fresh produce.

**Preferred Farming Practices:** Grass Fed/Pastured, Certified Organic

**Food Quality Programs Required:** Maryland Egg Quality Assurance

**Products Needed:** All Fruits and Vegetables, Apples, Arugula, Asparagus, Beets, Blackberries, Blueberries, Bok Choy, Boysenberries, Broccoli, Brussel Sprouts, Cabbage, Cantaloupes, Carrots, Cauliflower, Celery, Cherries, Collards, Cucumbers, Currants, Daikon, Edamame Soybeans, Eggplant, Endive, Figs, Garlic, Green Beans, Green Onions, Green Peppers, Horseradish, Hot Peppers, Kale, Leeks, Lettuce, Lima Beans, Melons, Mushrooms, Mustard Greens, Nectarines, Okra, Onions, Parsnips, Peaches, Pears, Peas, Persimmons, Plums, Potatoes, Radishes, Raspberries, Rhubarb, Rutabagas, Salad Greens, Shallots, Spinach, Sprouts, Squash, Strawberries, Sweet Corn, Sweet Peppers, Sweet Potatoes, Swiss Chard, Tomatillos, Tomatoes, Turnips, Watermelons, Zucchini, All Meats, Beef, Chicken, Geese, Goat, All Seafood, Crab Meat

## Cup Café

1 East Main St., Westminster, MD 21157  
Carroll County

Traci Malinoski, Owner  
traci.ann.evans@gmail.com, (410) 848-7622

**Business Description:** Café.

**Preferred Farming Practices:** Grass Fed/Pastured, Certified Organic

**Products Needed:** Apples, Beets, Blueberries, Broccoli, Carrots, Cucumbers, Currants, Green Onions, Kale, Lettuce, Mushrooms, Onions, Pears, Salad Greens, Spinach, Strawberries, Sweet Peppers, Sweet Potatoes, Tomatoes, Chicken, Turkey

## Dawson's Market

255 N. Washington St., Rockville, MD 20852  
Montgomery County

Brandy Turek, Produce Manager  
bfaragasso@dawsonsmarket.com, (240) 428-1449

**Business Description:** Natural/Organic neighborhood food market.

**Preferred Farming Practices:** Conventional, Grass Fed/Pastured, Certified Organic

**Food Quality Programs Required:** USDA Inspection (Beef, Pork, Lamb, Goat, Poultry)

**Products Needed:** All Fruits and Vegetables, Beef, Bison, Chicken, Lamb, Pork, Turkey, Crab Meat

## Denson's Grocery and R&B Oyster Bar

www.densongrocery.com  
117 Washington Ave., Colonial Beach, VA 22443  
Westmoreland County

Bernard Denson, President  
rocky.denson@gmail.com, (804) 224-4121  
Tyler Hicks, Sous Chef

**Business Description:** Specialty food grocery and full-service Chesapeake Bay farm-to-table restaurant.

**Preferred Farming Practices:** Conventional, Grass Fed/Pastured, Certified Organic

**Food Quality Programs Required:** USDA Inspection (Beef, Pork, Lamb, Goat, Poultry)

**Products Needed:** All Fruits and Vegetables, All Meats, All Seafood

## Dig Inn

www.diginn.com  
1235 Broadway, 2nd Floor, New York City, NY 10001  
New York City

Taylor Lanzet, Director of Supply & Sustainability  
taylor@diginn.com, (973) 986-7776

**Business Description:** Founded in 2011, Dig Inn created its own category in the restaurant industry ("fine-fast") combining aspects of both fine dining and fast casual concepts, choosing responsibly sourced ingredients and creating homemade meals. Our mission is twofold. We're tackling the country's food problem by building a more direct supply chain and giving people access and choice when it comes to seasonal, sustainable and delicious food. Most importantly, we believe our food needs to taste good, which directly depends on the freshness and quality of the meat and produce we choose. Food that is seasonally sourced from nearby farms just tastes better.

**Preferred Farming Practices:** Conventional, Grass Fed/Pastured, Certified Organic

**Products Needed:** All Fruits and Vegetables

## Eat Sprout

www.eatsprout.com  
335 N. Aurora St., Easton, MD 21601  
Talbot County

Ryan Groll, Owner  
ryan@eatsprout.com, (443) 223-0642  
Emily Groll, Owner  
Wes Sampson, Executive Chef  
Jaz Thompson, Chef  
Julia Bigelow, Baker

**Business Description:** Local, organic, ready-to-eat food. Delivered. Café, grab-n-go.

**Preferred Farming Practices:** Grass Fed/Pastured, Certified Organic

**Products Needed:** All Fruits and Vegetables, All Meats, All Seafood

## Eddie's of Roland Park

www.eddiesofrolandpark.com  
6223 1/2 N. Charles St., Baltimore, MD 21212  
Baltimore City

Michael Schaffer, Vice President  
doneill@eddiesofrolandpark.com, (410) 323-3656  
Andrew Schaffer, Facilitator  
aschaffer@eddiesofrolandpark.com, (410) 323-3656  
Tina Knight, Store Manager  
tknight@eddiesofrolandpark.com, (410) 323-3656  
Dave Jachelski, Store Manager  
djachelski@eddiesofrolandpark.com, (410) 323-3656  
Jeff Fisher, Produce Manager  
jfisher@eddiesofrolandpark.com, (410) 323-3656  
Steven Miller, Meat Manager  
smiller@eddiesofrolandpark.com, (410) 323-3656

**Business Description:** Gourmet grocer.

**Preferred Farming Practices:** Conventional, Grass Fed/  
Pastured, Certified Organic

**Products Needed:** All Fruits and Vegetables, All Meats,  
All Seafood

## Edward G. Rahl & Sons

www.rahlproduce.com  
7460 Conowingo Ave., Jessup, MD 20794  
Howard County

Joe Rahl, President  
joe.rahl@rahlproduce.com, (410) 799-3800  
Keith Snyder, Watermelon Sales and Purchasing  
keith@rahlproduce.com, (410) 799-3800  
Scott Phillips, Morning Sales  
scott@rahlproduce.com, Cell (410) 458-8027  
Sonny Serio

**Business Description:** Edward G. Rahl & Sons Inc. offers delivery to retailers and distributors throughout the Baltimore/ Washington metropolitan area and into parts of Pennsylvania and Northern Virginia.

**Preferred Farming Practices:** Conventional

**Food Quality Programs Required:** MDA GAP Certification, USDA GAP/GHP Certification, USDA Harmonized GAP Plus (GFSI)

**Products Needed:** All Fruits and Vegetables

## Frederick County Public Schools

33 Thomas Johnson Drive, Frederick, MD 21702  
Frederick County

Stephen O'Brey, Procurement Coordinator  
stephen.obrey@fcps.org, (301) 644-5060  
Alysia Mason Feuer, Program Coordinator  
farm2schoolfrederickcounty@gmail.com  
Janice Wiles, President Community FARE  
frederickfoodhub@gmail.com

**Business Description:** Frederick County Schools Food and Nutrition Services Department.

**Preferred Farming Practices:** Conventional

**Products Needed:** All Fruits and Vegetables, Beef, Chicken, Pork, Turkey

## Fully Grown LLC

www.fullygrown.co  
1142 Pelham Wood Rd., Parkville, MD 21234  
Baltimore County

Brianna Billups, CEO  
briannabillups@fullygrown.co, (410) 905-8985  
Derrick Mondowney, COO  
derrick@fullygrown.co, (410) 905-8985

**Business Description:** Fully Grown is a product- and service-driven company on a mission to eradicate food deserts. We offer a meal prep delivery service and all-natural fruit-based snacks. Our goal is to transform habits with well-balanced weekly meal prep, from our scratch kitchen to the customer's door.

**Preferred Farming Practices:** Conventional, Certified Organic

**Food Quality Programs Required:** USDA Inspection (Beef, Pork, Lamb, Goat, Poultry)

**Products Needed:** Apples, Arugula, Asian Pears, Asparagus, Blackberries, Blueberries, Broccoli, Brussel Sprouts, Cabbage, Carrots, Cauliflower, Celery, Cherries, Collards, Cucumbers, Currants, Eggplant, Garlic, Grapes, Green Beans, Green Onions, Green Peppers, Kale, Lettuce, Mushrooms, Nectarines, Onions, Peaches, Pears, Peas, Plums, Potatoes, Radishes, Raspberries, Salad Greens, Spinach, Squash, Strawberries, Sweet Corn, Sweet Peppers, Sweet Potatoes, Tomatoes, Watermelons, Zucchini, Chicken, Turkey, Crab Meat

---

### G. Cefalu & Bro. Inc.

7540 Assateague Drive, Jessup, MD 20794  
Howard County

Garrison Gephart, Buyer  
garrison@gcefulu.com, (443) 661-1181  
Sean Floyd, Buyer  
sfloyd@gcefulu.com, (443) 661-5629

**Business Description:** Wholesaler/Foodservice.  
**Preferred Farming Practices:** Conventional  
**Food Quality Programs Required:** USDA Harmonized  
GAP Plus (GFSI)

**Products Needed:** All Fruits and Vegetables

---

### Gertrude's

www.gertrudesbaltimore.com  
10 Art Museum Drive, Baltimore, MD 21218  
Baltimore City

John Shields, Chef/Owner  
mrcrabcake@gmail.com, (410) 889-3399  
Steven Balcer, Chef  
smb13@comcast.net

**Business Description:** Fine dining restaurant focusing  
on regional, Chesapeake fare.  
**Preferred Farming Practices:** Conventional, Grass Fed/  
Pastured, Certified Organic

**Products Needed:** All Fruits and Vegetables, All Meats,  
All Seafood

---

### Greenbelt Co-op Supermarket & Pharmacy

www.greenbelt.coop  
121 Centerway, Greenbelt, MD 20770  
Prince George's County

Joe Gareri, Marketing & Outreach Coordinator  
info@greenbelt.coop, (301) 474-0522

**Business Description:** Cooperative supermarket  
and pharmacy that includes a full service produce  
department, dairy, meats, cheeses, groceries, bakery,  
beer and wine.  
**Preferred Farming Practices:** Conventional, Grass Fed/  
Pastured

**Products Needed:** All Fruits and Vegetables, All Meats,  
All Seafood

---

### Gypsy Bar LLP

www.gypsystruckstaurant.com  
3515 Clipper Mill Road, Baltimore, MD 21211  
Baltimore City

Jenny Gaintner, General Manager  
jenny@gypsystruckstaurant.com, (443) 869-5602

**Business Description:** Restaurant serving global street  
cuisine inspired dishes and drinks  
**Preferred Farming Practices:** Conventional, Grass Fed/  
Pastured, Certified Organic  
**Food Quality Programs Required:**

**Products Needed:** All Fruits and Vegetables, Beef,  
Chicken, Lamb, Pork, Turkey, All Seafood



## Harris Teeter

www.harristeeter.com  
701 Crestdale Rd., Matthews, NC 28105  
Mecklenburg County

Robert Daly, Produce Field Buyer  
rdaly@harristeeter.com, (202) 744-0348  
Paul Cogan, Produce Merchandiser  
pcogan@harristeeter.com

**Business Description:** Grocery store chain.  
**Preferred Farming Practices:** Conventional  
**Food Quality Programs Required:** MDA GAP Certification, USDA GAP/GHP Certification, USDA Harmonized GAP Plus (GFSI)

**Products Needed:** All Fruits and Vegetables

## Home Grown Cafe

www.homegrowncafe.com  
126 East Main St., Newark, DE 19711  
New Castle County

Andrew Thorne, Chef  
andrew@homegrowncafe.com, (302) 266-6993

**Business Description:** Vegan, gluten-free, vegetarian restaurant.  
**Preferred Farming Practices:** Conventional Grass Fed/Pastured Certified Organic

**Products Needed:** All Fruits and Vegetables, Beef, Chicken, Pork, Turkey, Crab Meat

## Infusion Hot Sauce Company

www.infusionhotsauce.com  
19836 Bazzellton Place, Montgomery Village, MD 20886  
Montgomery County

Alan Kuzminsky, President  
alank@infusionhotsauce.com, (240) 401-0973  
Nina Schloss, Hot Sauce Schloss  
nina.n.schloss@gmail.com

**Business Description:** Condiment manufacturing.  
**Preferred Farming Practices:** Certified Organic

**Products Needed:** Garlic, Hot Peppers

## Keany Produce & Gourmet

www.keanyproduce.com  
3310 75th Ave., Landover, MD 20785  
Prince George's County

Cassidy Williams, Social Media & Marketing Coordinator  
cassidy.williams@keanyproduce.com, (202) 527-4842  
Steve Welch, Local and Specialty Purchaser  
stephen.welch@keanyproduce.com, (202) 527-4842

**Business Description:** Keany Produce is committed to distributing the freshest high-quality products to the Mid-Atlantic region.  
**Preferred Farming Practices:** Conventional, Grass Fed/Pastured, Certified Organic  
**Food Quality Programs Required:** MDA GAP Certification  
**Products Needed:** All fruits and vegetables

## Kent Island Farmers Market

www.kifm830.wixsite.com/kifm  
725 Kimberly Way, Stevensville, MD 21666  
Queen Anne's County

Diane Bedlin, Organizer and Manager  
dianebedlin@gmail.com, (410) 643-3283  
Llza Bedlin, Assistant Manager  
lizalove@gmail.com, (410) 643-3283

**Business Description:** Year-round farmers' market. We also aggregate and run as a pseudo food hub for other businesses trying to source local.  
**Preferred Farming Practices:** Grass Fed/Pastured, Certified Organic  
**Food Quality Programs Required:** USDA Inspection (Beef, Pork, Lamb, Goat, Poultry), MDA Rabbit and Poultry On-Farm Slaughter/Processing Program, Maryland Egg Quality Assurance

**Products Needed:** Beef, Bison, Goat, Lamb, Rabbit, Turkey, Veal, Bluefish, Clams, Flounder

## Latitude Seafood Co.

www.latitudeseafoodco.com  
9216 Stony Point Pkwy., Richmond, VA 23235  
Richmond County

Kevin Grubbs, Owner  
grubbw@gmail.com, (804) 379-8100  
Doug Terry, Kitchen Manager  
Karen Andino-Mora, Kitchen Manager  
Lindsay Newport, Marketing Manager

**Business Description:** Seafood restaurant  
**Preferred Farming Practices:** Conventional, Grass Fed/  
Pastured, Certified Organic

**Products Needed:** All Fruits and Vegetables, All Meats,  
All Seafood

## Laughing Crab Catering

www.laughingcrabcatering.com  
100 S Washington St., Havre de Grace, MD 21077  
Howard County

Chuck Maslin, Owner/Chef  
laughingcrab@aol.com, (410) 459-6463

**Business Description:** We do 27-time award-winning  
crabcakes and Chesapeake Bay Seafood from four units  
operating from New Hampshire to Key West out to  
Michigan and Alabama and Texas. We are certified true  
blue for our use of Chesapeake Bay seafood.  
**Preferred Farming Practices:** Conventional

**Products Needed:** Cantaloupes, Horseradish, Hot  
Peppers, Onions, Potatoes, All Seafood

## Level - Small Plates Lounge

www.levelannapolis.com  
69 West Street, Annapolis, MD 21401  
Anne Arundel County

Eric Sowers, Owner  
eric@levelannapolis.com, (410) 533-9650  
Jake Fleming, Manager  
Kelvin Flores, Executive Chef  
Ari Baranson, Sous Chef

**Business Description:** Full service restaurant serving  
small plates and craft cocktails.  
**Preferred Farming Practices:** Grass Fed/Pastured,  
Certified Organic  
**Food Quality Programs Required:** USDA Inspection  
(Beef, Pork, Lamb, Goat, Poultry), Maryland Egg Quality  
Assurance

**Products Needed:** All Fruits and Vegetables, All Meats,  
All Seafood

## Lewnes' Steakhouse

www.LewnesSteakhouse.com  
401 Fourth Street, Annapolis, MD 21403  
Anne Arundel County

Mack Lewnes, Owner  
mcl79@cornell.edu, (410) 263-1617  
Sam Lewnes, Owner  
sam.lewnes@gmail.com

**Business Description:** Family run fine dining prime  
steakhouse.  
**Preferred Farming Practices:** Conventional, Grass Fed/  
Pastured, Certified Organic  
**Food Quality Programs Required:** USDA Inspection  
(Beef, Pork, Lamb, Goat, Poultry)

**Products Needed:** Asparagus, Green Peppers,  
Horseradish, Lettuce, Mushrooms, Onions, Potatoes,  
Spinach, Strawberries, Tomatoes, Beef, Chicken, Lamb,  
Pork, Veal, Clams, Crab Meat

## MeatCrafters, Inc.

www.meatcrafters.com  
3900 Ironwood Place, Landover, MD 20785  
Prince George's County

Aaron Kushner, General Manager  
production@meatcrafters.com, (240) 764-7653  
Stanley Feder, President  
production@meatcrafters.com, (240) 764-7653  
JEB Gavin, Director of Logistics  
jeb@meatcrafters.com, (240) 764-7653  
Mitch Berliner, Chief Sampling Officer  
mitch@meatcrafters.com, (240) 764-7653

**Business Description:** MeatCrafters, Inc. is a producer of super high quality sausages, salamis, other charcuterie, and the maker of Skinny Salamis. We make everything by hand, in small batches, and we are the only USDA-approved producer of traditionally cured salami and charcuterie in Maryland or DC. MeatCrafters also prides itself on its partnerships producing sausages and salamis for farmers in Maryland, Virginia, Pennsylvania, and DC. We are able to add a tremendous amount of value to meats being raised locally, and we offer custom formulations and custom labeling for our farm partners.

**Food Quality Programs Required:** USDA Inspection (Beef, Pork, Lamb, Goat, Poultry)

**Products Needed:** All Fruits and Vegetables, All Meats,

## MOM's Organic Market

www.momsorganicmarket.com  
5612 Randolph Rd., Rockville, MD 20852  
Montgomery County

Chris Miller, Regional Coordinator-Produce, Meat, Seafood, Cheese, Bulk  
(301) 816-1133

**Business Description:** Maryland-based, independently owned, natural and organic grocery store chain with 19 stores.

**Preferred Farming Practices:** Grass Fed/Pastured, Certified Organic

**Food Quality Programs Required:** USDA Inspection (Beef, Pork, Lamb, Goat, Poultry)

**Products Needed:** All Fruits and Vegetables, All Meats, All Seafood

## Oakley's Farm Market

6558 Rockawalkin Rd., Salisbury, MD 21801  
Wicomico County

Connie Oakley, Manager  
melonsforyou@msn.com, (410) 430-6010  
Thomas Oakley

**Business Description:** Roadside produce market with fresh, locally grown produce.

**Products Needed:** All Fruits and Vegetables, All Meats, All Seafood

## Olney Farmers Market

www.olneyfarmersmarket.com  
3016 Finsel Ct., Olney, MD 20832  
Montgomery County

Janet Terry, President  
jterrymarket@gmail.com, (202) 257-5326

**Business Description:** Large farmers market with 60-plus vendors year-round.

**Preferred Farming Practices:** Conventional, Grass Fed/Pastured, Certified Organic

**Products Needed:** All Fruits and Vegetables, Turkey, All Seafood

## Pairings Bistro

2105 Laurel Bush Road, Bel Air, MD 21015  
Harford County

Sean Gomez, Executive Chef  
sgomez@pairingsbistro.com, (410) 569-5006

**Business Description:** Restaurant/catering/food truck.

**Preferred Farming Practices:** Conventional, Grass Fed/Pastured, Certified Organic

**Products Needed:** All Fruits and Vegetables, All Meats, All Seafood

## The Palate Pleasers

www.palatepleasers.com  
1023 Bay Ridge Ave., Annapolis, MD 21403  
Anne Arundel County

Amy Daniels, Executive Chef  
amy.palatepleasers@me.com, (410) 263-6941

**Business Description:** Family-owned Gourmet-To-Go and Off-Premise Catering company, established in 1985.

**Preferred Farming Practices:** Conventional, Grass Fed/Pastured, Certified Organic

**Products Needed:** Apples, Arugula, Asparagus, Beets, Blackberries, Blueberries, Bok Choy, Broccoli, Brussel Sprouts, Cabbage, Cantaloupes, Carrots, Cauliflower, Celery, Cucumbers, Eggplant, Grapes, Green Beans, Green Onions, Green Peppers, Lettuce, Melons, Mushrooms, Onions, Potatoes, Radishes, Raspberries, Rhubarb, Salad Greens, Shallots, Spinach, Squash, Strawberries, Sweet Peppers, Sweet Potatoes, Tomatillos, Tomatoes, Watermelons, Zucchini, Beef, Chicken, Pork, Turkey, Crab Meat,

## PD/BA LLC

www.pescadeli.com  
4215B Howard Avenue, Kensington, MD 20895  
Montgomery County

Adam Leichtner, Director of Retail Operations  
aleichtner@anhmarket.com, (301) 841-8151  
Santi Zabaleta, Principal  
santi@anhmarket.com  
Christopher Hadley, Sales  
chadley@anhmarket.com

**Business Description:** Gourmet retail market with fresh fish counter, butcher counter, charcuterie, artisan cheeses, prepared foods and grocery with numerous imports from all over the world.

**Preferred Farming Practices:** Conventional, Grass Fed/Pastured, Certified Organic

**Products Needed:** All Fruits and Vegetables, All Meats, All Seafood

## Preserve

www.preserve-eats.com  
164 Main Street, Annapolis, MD 21401  
Anne Arundel County

Jeremy Hoffman, Restaurant  
jeremy@preserve-eats.com, (610) 506-1288  
Brian Cieslak (sous chef)  
brian@preserve-eats.com, (610) 506-1288  
Greg Anderson (sous chef)  
greg@preserve-eats.com, (610) 506-1288

**Business Description:** Restaurant in Annapolis.

**Preferred Farming Practices:** Grass Fed/Pastured, Certified Organic

**Products Needed:** All Fruits and Vegetables, All Meats, All Seafood

## Produce Source Partners

www.producesourcepartners.com  
13167 Telcourt Road, Ashland, VA 23005  
Hanover County

Dan Budi, Director Retail Sales  
dbudi@webpsp.com, (804) 412-2564

**Business Description:** Local produce distribution to major retail chains in the mid-Atlantic.

**Preferred Farming Practices:** Conventional, Certified Organic

**Food Quality Programs Required:** MDA GAP Certification, USDA GAP/GHP Certification

**Products Needed:** All Fruits and Vegetables



## Pure Wine Café

8210 Main St., Ellicott City, MD 21043  
Howard County

Paul Strain, Owner  
pj@purewinecafe.com, (410) 480-5037  
David Duffy, Head Chef  
eat.drink.bike@gmail.com, (410) 480-5037

**Business Description:** Wine Bar and Restaurant.  
**Preferred Farming Practices:** Grass Fed/Pastured

**Products Needed:** Apples, Asian Pears, Asparagus, Beets, Brussel Sprouts, Cabbage, Carrots, Cauliflower, Daikon, Eggplant, Garlic, Hot Peppers, Kale, Mushrooms, Mustard Greens, Okra, Onions, Peaches, Pears, Radishes, Salad Greens, Sweet Potatoes, Tomatoes, Zucchini, Beef, Chicken, Duck, Lamb, Pork, Clams, Crab Meat

## Queen Anne Farm Inc.

www.queenannefarm.com  
18102 Central Ave., Mitchellville, MD 30716  
Prince George's County

Carl Brady, Owner  
queenannefarm18103@yahoo.com, (301) 249-2427  
Carole M Brady, Owner  
cmoederbrady@aol.com, (301) 249-2427

**Business Description:** On-site farm market. Produce and pumpkin growers.  
**Preferred Farming Practices:** Conventional, Grass Fed/Pastured, Certified Organic

**Products Needed:** All Fruits and Vegetables, All Meats, All Seafood

## Ricciutis Kitchen

www.Ricciutis.com  
4101 Gregg Rd., Brookeville, MD 20833  
Montgomery County

James Ricciuti, Owner  
info@ricciutis.com, (240) 793-4123

**Business Description:** Farm-to-table featuring wood-fired pizza. 85% of our produce is sourced in Montgomery County and is organic.  
**Preferred Farming Practices:** Grass Fed/Pastured, Certified Organic

**Food Quality Programs Required:**

**Products Needed:** All Fruits and Vegetables, All Meats, All Seafood

## Riva Gardens

www.rivagarden.net  
3234 Riva Rd., Riva, MD 21140  
Anne Arundel County

David and Diane Morehead, Owners  
rivagees@yahoo.com, (410) 956-2942

**Business Description:** Produce stand and farmers market.  
**Preferred Farming Practices:** Conventional

**Products Needed:** All Fruits and Vegetables, All Meats, All Seafood

## River Bend Bistro

www.riverbendbistro.com  
7966 Fort Hunt Road, Alexandria, VA 22308  
Fairfax County

Caroline Ross, Chef/Owner  
caroline@riverbendbistro.com, (703) 347-7545  
Bill Ross Proprietor  
bill@riverbendbistro.com, (703) 347-7545

**Business Description:** An American bistro featuring locally sourced products.

**Preferred Farming Practices:** Conventional

**Products Needed:** All Fruits and Vegetables, Beef, Bison, Chicken, Duck, Gamebird, Geese, Goat, Lamb, Pork, Rabbit, Turkey, Veal, All Seafood

## ROCKLANDS Barbeque and Grilling Company

2418 Wisconsin Avenue, NW, Washington, DC 20007

John Snedden, President  
john@rocklands.com, (202) 337-1925  
Bradley Monroe, Corporate Kitchen Chef  
bradley@rocklands.com, (202) 337-1925

**Business Description:** Fast-Casual Restaurant.

**Preferred Farming Practices:** Conventional, Grass Fed/Pastured, Certified Organic

**Food Quality Programs Required:** USDA Inspection (Beef, Pork, Lamb, Goat, Poultry)

**Products Needed:** Arugula, Beets, Broccoli, Brussel Sprouts, Cauliflower, Celery, Collards, Green Beans, Lettuce, Onions, Salad Greens, Spinach, Tomatoes, Beef, Chicken, Lamb, Pork, Turkey,

## Rooster & Hen

www.roosterandhenstore.com  
2302 Frederick Rd., Catonsville, MD 21228  
Baltimore County

Allison Smith, Owner  
roosterandhenstore@gmail.com, (301) 910-1669  
Joseph McRedmond, Co-Owner

**Business Description:** Local food market.

**Preferred Farming Practices:** Grass Fed/Pastured, Certified Organic

**Products Needed:** All Fruits and Vegetables, Beef, Bison, Chicken, Pork, Turkey

## SAGE Dining Services

www.sagedining.com  
1402 York Rd., Lutherville, MD 21093  
Baltimore County

Stephen Freas, Purchasing Director  
steve@sagedining.com, (410) 339-3950

**Business Description:** SAGE Dining Services is the nation's leading provider of sustainable dining services and catering to discerning independent schools and private colleges throughout the United States. SAGE is based in Lutherville, MD in the heart of Baltimore County.

**Preferred Farming Practices:** Conventional, Grass Fed/Pastured, Certified Organic

**Food Quality Programs Required:** MDA GAP Certification, USDA GAP/GHP Certification

**Products Needed:** All Fruits and Vegetables, All Meats, All Seafood

## Sam's on the Waterfront

www.samsonthewaterfront.com  
2020 Chesapeake Harbour Drive, Annapolis, MD 21403  
Anne Arundel County

Andrew Parks, Owner  
info@samsonthewaterfront.com, (410) 263-3600  
Brendan O'Dea, Chef  
info@samsonthewaterfront.com, (410) 263-3600

**Business Description:** Restaurant.

**Preferred Farming Practices:** Conventional, Grass Fed/  
Pastured

**Food Quality Programs Required:** USDA GAP/GHP  
Certification, USDA Harmonized GAP Plus (GFSI), USDA  
Inspection (Beef, Pork, Lamb, Goat, Poultry)

**Products Needed:** All Fruits and Vegetables, All Meats,  
All Seafood

## Santoni's Marketplace & Catering

4855 Butler Rd., Glyndon, MD 21071  
Baltimore County

Michael Serio, VP of Operations  
mserio@santonis.com, (410) 833-6610  
Jessica Greenwell Assistant Store Manager  
jgreenwell@santonis.com, (410) 833-6610  
Jackie Wegner, Assistant Manager  
jwegner@santonis.com, (410) 833-6610  
Mark, Ciepiela, Manager, mciepiela@santonis.com  
Mary Sakers, Inventory Control Manager  
msakers@santonis.com, (410) 833-6610

**Business Description:** Retail grocer and catering  
company.

**Preferred Farming Practices:** Conventional, Grass Fed/  
Pastured, Certified Organic

**Food Quality Programs Required:** USDA Inspection  
(Beef, Pork, Lamb, Goat, Poultry), Maryland Egg Quality  
Assurance

**Products Needed:** All Fruits and Vegetables, Beef, Bison,  
Chicken, Duck, Lamb, Pork, Turkey, Clams, Crab Meat,  
Flounder

## Saval Foodservice

www.Savalfoods.com  
PO Box 8630, 6740 Dorsey Road, Elkridge, MD 21075  
Howard County

Ken Mack, Purchasing Manager  
kenmack@savalfoods.com, (443) 561-3207  
Bryan Bernstein, Marketing Manager  
bryanbernstein@savalfoods.com, (443) 561-3207

**Business Description:** Braoadline distributor.

**Preferred Farming Practices:** Conventional  
**Food Quality Programs Required:** MDA GAP  
Certification, USDA GAP/GHP Certification, USDA  
Inspection (Beef, Pork, Lamb, Goat, Poultry)

**Products Needed:** All Fruits and Vegetables, All Meats,  
All Seafood

## Shore Gourmet

www.shoregourmet.com  
512 Franklin Street, Denton, MD 21629  
Caroline County

Roxanne Wolf, Development Coordinator  
roxanne.shogo@gmail.com, (410) 924-3447  
Holly Foster, Community Outreach Coordinator  
holly.shogo@gmail.com, (410) 924-0463

**Business Description:** Rural and economic development  
of local products and value add for local farmers in  
wholesale and retail settings.

**Food Quality Programs Required:** USDA Inspection  
(Beef, Pork, Lamb, Goat, Poultry)

**Products Needed:** All Fruits and Vegetables, All Meats,  
All Seafood

## Slate Farm Brewery

www.slatefarmbrewery.com  
2128 Whiteford Road, Whiteford, MD 21160  
Harford County

Denise Cangialosi, Member  
slatefarmbrewery@gmail.com, (443) 528-7443  
Colleen Sutton, Stand Manager  
slatefarmbrewery@gmail.com

**Business Description:** Farm stand that includes our farm-brewed beer.

**Preferred Farming Practices:** Conventional

**Products Needed:** Lettuce, Salad Greens, Strawberries, Tomatillos, Watermelons, Beef, Bison

## St. Mary's County Public Schools

27190 Point Lookout Road, Loveville, MD 20656  
St. Mary's County

Megan Doran, Director of Food and Nutrition Service  
madoran@smcps.org, (301) 475-4255  
Cherie Cotsonas, Food and Nutrition Coordinator  
Kaitlin Russell, Food and Nutrition Specialist

**Business Description:** School system.

**Products Needed:** All Fruits and Vegetables

## Sudano's Produce

www.Sudanosproduce.com  
7480 Conowingo Ave., Unit 18, Jessup, MD 20794  
Howard County

Carroll Lane, V.P.  
carroll@sudanosproduce.com, (410) 799-8224  
Ben Sudano, President  
ben@sudanosproduce.com, (410) 799-8224

**Business Description:** Produce distributor.

**Preferred Farming Practices:** Conventional, Certified Organic

**Food Quality Programs Required:** USDA GAP/GHP Certification

**Products Needed:** All Fruits and Vegetables

## Tom Lange Co.

www.tomlange.com  
602 Little Gloucester Road, Blackwood, NJ 08012  
Gloucester County

Bill Burr, Account Manager  
bburr@tomlange.com, (412) 968-5678

**Business Description:** Account Manager/Distributor/ Broker of Fresh Produce.

**Preferred Farming Practices:** Conventional

**Food Quality Programs Required:** USDA GAP/GHP Certification

**Products Needed:** All Fruits and Vegetables

## UMES

www.umes.edu  
9630 Gudelsky Drive, Rockville, MD 20850  
Montgomery County

Susan Callahan, Chef Instructor  
sbcallahan@umes.edu, (301) 738-6057

**Business Description:** Food and hospitality courses and culinary events.

**Preferred Farming Practices:** Conventional, Grass Fed/ Pastured, Certified Organic

**Food Quality Programs Required:**

**Products Needed:** All Fruits and Vegetables, All Meats, All Seafood

## Vin 909 Winecafe

www.vin909.com  
909 Bay Ridge Ave, Annapolis, MD 21403  
Anne Arundel County

Justin Moore, Chef  
justin@vin909.com, (410) 990-1846

**Business Description:** Restaurant and wine bar.

**Preferred Farming Practices:** Grass Fed/Pastured, Certified Organic

**Products Needed:** All Fruits and Vegetables, All Meats, All Seafood



---

## Washington's Green Grocer

www.washingtonsgreengrocer.com

8741 Ashwood Drive, Unit P, Capital Heights, MD 20743

Prince George's County

Tom Perchinsky, Owner

tom@washingtonsgreengrocer.com, (410) 279-5332

Holly Mackey Perchinsky

holly@washingtonsgreengrocer.com, (410) 279-5332

**Business Description:** Local business providing fresh boxes of local produce and staples deliveries to MD/DC/VA/DE. We have been in business since 1994. We support local farmers and product producers.

**Preferred Farming Practices:** Grass Fed/Pastured, Certified Organic

**Food Quality Programs Required:** USDA Inspection (Beef, Pork, Lamb, Goat, Poultry), Maryland Egg Quality Assurance

**Products Needed:** All Fruits and Vegetables, All Meats, All Seafood

---

## Wonderland Coffee and Lounge

1243 Shopping Center Dr., Stevensville, MD 21666

Queen Anne's County

Cory Chappell, Owner

corychappel@hotmail.com, (410) 443-3635

Tom Chappell, Mike Mastroberti, Owners

Kirstin Whitaker, Sales

Lanae McIlree, Development

**Business Description:** Coffee lounge and wine bar.

**Preferred Farming Practices:** Conventional, Grass Fed/Pastured, Certified Organic

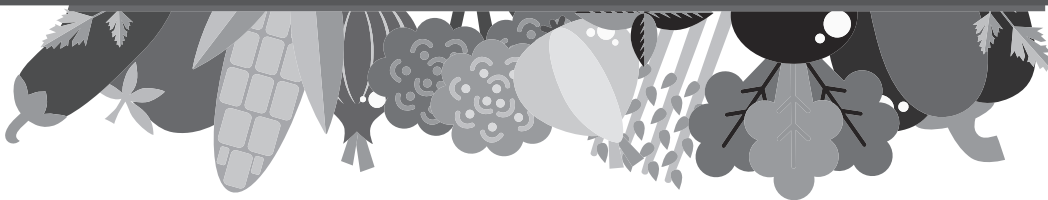
**Products Needed:** All Fruits and Vegetables, Green Peppers, All Meats, All Seafood



## OTHER ATTENDEES

Alice's AgriMaryland  
Anne Arundel Economic Development  
Corporation  
Catillation.com  
Cheesemaker  
Circadian Farms  
DC Water  
Eastern Shore Land Conservancy  
Grow & Fortify  
Gypsy Bar LLP  
Jump with Jill  
Market Solutions LLC  
Maryland Department of Commerce  
Maryland Department of the  
Environment

Maryland Food Bank  
Maryland Food Center Authority  
Maryland State Department of  
Education  
OLLO  
Reed Hellman Wordsmith  
Remsberg INC  
Restaurant Association of Maryland  
SMADC  
UMES Extension  
University Maryland Extension  
University of Maryland Extension,  
FSNE  
Washington County Department of  
Business Development



## Alice's AgriMaryland

www.alices-agrimaryland.com  
1485 Old Annapolis Road, Woodbine, MD 21797  
Howard County

Alice Settle-Raskin, Owner/Consultant  
alices.agrimaryland@gmail.com, (240) 449-6435  
Pamela Reed, President, Mount Airy Main Street  
Association, reedpa01@yahoo.com

**Business Description:** Alice's AgriMaryland is focused on promoting and marketing Maryland's agribusiness community including our local farms, farmers, farmers' markets, produce, livestock, agritourism and our many agribusiness related operations. Buying local, fresh-from-the-farm products is healthy. The added benefit is it supports the local agricultural economy and adds to our quality of life here in Maryland. I am also representing the Mount Airy Main Street Farmers' Market, seeking vendors for our Wed. market, mid-May through Sept. See [www.MountAiryMainStreetFarmersMarket.org](http://www.MountAiryMainStreetFarmersMarket.org)

## Anne Arundel Economic Development Corporation

2660 Riva Road, Suite 200, Annapolis, MD 21401  
Anne Arundel County

Brittany Rawlings, Agriculture Specialist  
brawlings@aaedc.org, (410) 222-7410  
Dawn Seaton, Loan Administrator  
dseaton@aaedc.org, (410) 222-7410

**Business Description:** Anne Arundel Economic Development Corporation.

## Catillation.com

www.Catillation.com  
122 Olney-Sandy Spring Rd, #53 Ashton, MD 20861  
Montgomery County

Judy Newton, Writer/Reporter  
jnewton@ashcomp.com, (301) 774-0929  
Barry Newton, Photographer/Expediter  
bnewton@ashcomp.com, (301) 774-092

**Business Description:** A blog devoted to food and cooking, locally, regionally and globally. We place special emphasis on events, ingredients and establishments in the Chesapeake Bay foodshed.

## Cheesemaker

384 Lombard Road, Rising Sun, MD 21842  
Cecil County

Amanda Heilman, Cheesemaker  
mandajane00@gmail.com, (443) 669-5649

**Business Description:** Looking to provide artisan farmstead Maryland cheese from our cows.

## Circadian Farms

www.circadianfarms.com  
19040 Graystone Road, White Hall, MD 21161  
Baltimore County

Robert D'Antoni, CFO  
rda@cmc24.com, (443) 831-4367  
Zachary Williford, Chief Operations Officer  
zjw@cmc24.com, (443) 831-4367  
Claire D'Antonio, Plant Scientist  
claire@cmc24.com, (443) 831-4367  
Natalie D'Antonio, Marketing Specialist  
natalie@cmc24.com, (443) 831-4367

**Business Description:** Circadian Farms (a division of Circadian Management Corporation) is a family-owned and run hydroponic farm growing organic greens and herbs year-round, and considering working as an aggregator to provide fresh produce and other products from Maryland farms to various markets.

## DC Water

5000 Overlook Avenue, SW Washington, DC 20032

Saul Kinter, Business Development Program Manager  
saul.kinter@dcwater.com, (202) 787-2259

**Business Description:** DC Water is the water and sewer utility for the District of Columbia, providing water and sewer service to the District and wastewater treatment service for DC and parts of Maryland and Virginia.

## Eastern Shore Land Conservancy

[www.eslc.org](http://www.eslc.org)

114 S. Washington Street, Easton, MD 21601

Talbot County

Carol Bean, Agricultural Specialist

[cbean@eslc.org](mailto:cbean@eslc.org), (410) 690-1349

Katie Parks, Director of Conservation

[kparks@eslc.org](mailto:kparks@eslc.org)

**Business Description:** Eastern Shore Land Conservancy (ESLC) is a 501(c)3 nonprofit land conservation organization committed to preserving and sustaining the vibrant communities of the Eastern Shore and the lands and waters that connect them.

## Grow & Fortify

[www.growandfortify.com](http://www.growandfortify.com)

6247 Falls Road, Baltimore, MD 21209

Baltimore City

Kelly Dudeck, Chief Strategy Officer

[kelly@growandfortify.com](mailto:kelly@growandfortify.com), (410) 252-9463

**Business Description:** Grow & Fortify is built to support value-added agricultural organizations and the businesses they represent. We've gathered a team of professionals to support agricultural startups and ensure financial viability of our land, and ultimately, our community. Grow & Fortify is cultivating an environment where value-added agricultural producers, startups, operators and growers innovate and thrive.

## Gypsy Bar LLP

[www.gypsystruckstaurant.com](http://www.gypsystruckstaurant.com)

3515 Cliper Mill Road, Baltimore, MD 21211

Baltimore City

Jenny Gaintner, Manager

[jenny@gypsystruckstaurant.com](mailto:jenny@gypsystruckstaurant.com), (443) 869-5602

**Business Description:** Small, privately owned restaurant and bar.

## Jump with Jill

[www.jumpwithjill.com](http://www.jumpwithjill.com)

1172 2nd Ave., New Kensington, PA 15068

Westmoreland County

Jill Jayne, Creator & Big Cheese

[jill@jumpwithjill.com](mailto:jill@jumpwithjill.com), (800) 531-0760

**Business Description:** Jump with Jill is the world's only rock & roll nutrition show - a touring K-5 school assembly that uses music and dance to celebrate healthy habits by transforming nutrition education into a live concert. We activate nutrition education programs in schools serving as a marketing arm for growers and producers. Our live show, supporting educational materials, and publicity platform mobilize and engage your schools for a healthier tomorrow. Partner with Jump with Jill to make healthy rock across your state!

## Market Solutions LLC

[www.marketsolutionsllc.com](http://www.marketsolutionsllc.com)

4306 Leland St., Suite 101, Chevy Chase, MD 20815

Montgomery County

Mark Newman, President

[marknewman@marketsrus.com](mailto:marknewman@marketsrus.com), (301) 654-2949

**Business Description:** Market Solutions LLC is a leader in research-based strategy consulting and economic analysis for food, agriculture and seafood products. We provide practical, innovative, results-oriented solutions for clients in business, associations and government. In Maryland, the region and around the globe, we work with clients to understand and meet challenges, build markets and achieve long term success. We have long experience supporting "Maryland's Best" and others in Maryland agriculture with consumer and trade research and strategic counsel. We call it: "Insight for Action."



---

## Maryland Department of Commerce

401 E Pratt St., Baltimore, MD 21202  
Baltimore City

Ewing McDowell, Industry Specialist  
ewing.mcdowell1@maryland.gov, (443) 350-3196

**Business Description:** Ag Development

---

## Maryland Department of the Environment

1800 Washington Blvd., Suite 610, Baltimore, MD 21230  
Baltimore City

John Sullivan, Program Manager  
john.sullivan1@maryland.gov, (410) 537-3314  
Christy Bujnovszky  
christy.bujnovszky@maryland.gov, (410) 537-3314  
Dave Mrgich  
dave.mcgich@maryland.gov, (410) 537-3314

**Business Description:** Maryland Department of the Environment.

---

## Maryland Food Bank

www.mdfoodbank.org  
2200 Halethorpe Farms Road, Baltimore, MD 21227  
Baltimore City

Amy Cawley, Farm-to-Food Bank Manager  
acawley@mdfoodbank.org, (443) 735-0757  
Butch Langenfelder, Food Sourcing Manager  
Andrew Miller, Food Sourcing Manager  
Amy Chase, Director of Corporate Relations

**Business Description:** The Maryland Food Bank is a non-profit organization leading the movement to end hunger in Maryland. We have an extensive network of community and organizational partners across the state to distribute food to the more than 665,000 Marylanders who need us. We supply food to more than 1,250 food pantries, soup kitchens, shelters, and faith-based organizations that serve food-insecure Marylanders. We supplement this work with outreach programs that provide direct food assistance, educate the public on the importance of good nutrition, and fight hunger through innovative means. Our mission is to lead the movement and nurture the belief that together we can improve the lives of Marylanders by ending hunger.

---



---

## Maryland Food Center Authority

www.mfca.info  
7801 Oceano Avenue, Jessup, MD 20794  
Howard County

Peggy Torre, Executive Projects Coordinator  
ptorre@mfca.info, (410) 379-5760  
Angela Hopkins, Sr Director of Real Estate and Finance  
ahopkins@mfca.info, (410) 379-5760  
Diane Nelson, Accountant/Bookkeeper  
dnelson@mfca.info, (410) 379-5760  
Anja Lindner, Market Operations Administrator  
alindner@mfca.info, (410) 379-5760  
Gary Decker, Director of Market Operations  
gdecker@mfca.info, (410) 379-5760

**Business Description:** An independent state agency with a geographically centralized food distribution hub.

---

## Maryland State Department of Education

200 W. Baltimore Street, 3rd floor, Baltimore, MD 21201  
Baltimore City

Samantha Bader, Select Nutrition Initiatives Specialist  
Samantha.bader@maryland.gov, (410) 727-0513

**Business Description:** State Agency.

---

## OLLO

Mike Smollon, Consultant  
907 Perry Landing Court, Annapolis, MD 21401  
Anne Arundel County  
meatheadchef@aol.com, (443) 871-0302

**Business Description:** Working with producers to market their goods for retail and or wholesale to meet profitable margins, efficiency in doing business, understanding of customers needs, marketing their goods, media presence, government regulations research, HACCP, POS, packaging, quality assurance, inventory control, etc. My experience is based on 45 years of foodservice industry business. As a graduate of the Culinary Institute of America of Hyde Park NY in 1980, I've amassed a thorough culinary-based career in meat production, sales and inventory management. Former owner of My Butcher and More in Annapolis, an artisanal, custom-cut farm-to-table butcher and specialty local food shop.

---

## Reed Hellman Wordsmith

www.reedhellmanwordsmith.com  
8109 Dogwood Road, Windsor Mill, MD 21244  
Baltimore County

Reed Hellman, Journalist  
reedhellmanwordsmith@comcast.net, (410) 256-7471

### Business Description:

Journalist and food columnist, writing for Recreation News (www.recreationnews.com), the largest travel and leisure monthly in the Mid Atlantic.

## Remsberg INC

www.remsberg.com  
2507 Pleasantville Road, Fallston, MD 21047  
Harford County

Lena McBean, Photographer and Studio Manager  
studio@remsburg.com, (410) 598-8516

**Business Description:** Remsburg Inc's work includes high-production commercial photography, documentary, event coverage and fine-art photographic series. Edwin has co-authored several books, including, **Dishing Up Maryland** with Lucie Snodgrass, *Maryland's Vanishing Lives* with John Sherwood, *Outdoor Sculpture in Baltimore: A Historical Guide to Public Art in the Monumental City* with Cindy Kelly and more. Remsburg's images continue to exist and develop in these various realms: commercial, documentary, lifestyle and exhibited fine art works, and our inspiration remains in the creation of images that celebrate people, places and agriculture.

## Restaurant Association of Maryland

6301 Hillside Court, Columbia, MD 21046  
Howard County

Marshall Weston, President and CEO  
mweston@marylandrestaurants.com, (410) 290-6800  
Melvin Thompson, Senior V.P.  
mthompson@marylandrestaurants.com

**Business Description:** Trade Association with 2,000 restaurant members in Maryland.

## SMADC

www.smadc.com  
PO Box 745  
15045 Burnt Store Road, Hughesville, MD 20637  
Charles County

Shelby Watson-Hampton, Director  
swatsonhampton@smadc.com, (301) 274-1922  
Susan McQuilkin, Marketing Executive  
smcquilkin@smadc.com, (301) 274-1922  
Craig Sewell, Marketing and Livestock Specialist  
csewell@smadc.com, (301) 274-1922

**Business Description:** SMADC's purpose is to support farms and the future of agriculture in Southern Maryland. We are committed to expanding and promoting a viable and profitable agricultural farming community in Southern Maryland. While the primary focus is on the five Southern Maryland counties of Anne Arundel, Calvert, Charles, Prince George's and St. Mary's, many of our initiatives reach statewide. SMADC provides vision, support, grants, and marketing and promotion to area farmers. At SMADC, we are helping farmers to help themselves in creating a profitable farming future and helping the public to understand the importance of local farms to our overall economy. To achieve that goal, SMADC is committed to helping connect local farmers to their consumers and to the food economy.

## UMES Extension

Hensen Center, Princess Anne, MD 21853  
Somerset County

Erroll Mattox, Farm Management Specialist  
eamattox@umes.edu, (302) 628-0471

**Business Description:** Extension

---

## University Maryland Extension

[www.extension.umd.edu/Agmarketing](http://www.extension.umd.edu/Agmarketing)  
WMREC, 18330 Keedysville Road, Keedysville, MD 21756  
Washington County

Ginger Myers, Marketing Specialist  
[gsmyers@umd.edu](mailto:gsmyers@umd.edu), (301) 432-2767

**Business Description:** Business development, market plans and strategies, entrepreneurship coaching, agritourism resources, direct marketing enterprises, support for new and beginning farmers.

---

## University of Maryland Extension, FSNE

10632 Little Patuxent Parkway, Suite 435, Columbia, MD 21044  
Howard County

Heather Buritsch, FSNE Gardening for Nutrition Coordinator  
[buritsch@umd.edu](mailto:buritsch@umd.edu), (443) 283-2302

**Business Description:** Statewide Gardening for Nutrition and Farm-to-School Coordinator for the Maryland SNAP-Ed program.

---

## Washington County Department of Business Development

[www.washco-md.net](http://www.washco-md.net)  
100 W Washington Street, Suite 1401, Hagerstown, MD 21740  
Washington County

Leslie Hart, Ag Business Development Specialist  
[lhart@washco-md.net](mailto:lhart@washco-md.net), (240) 313-2284

**Business Description:** AMP